

Datasheet for ABIN654891

anti-RPL27A antibody (C-Term)

4 Images

1 Publication

[Go to Product page](#)

Overview

Quantity:	400 µL
Target:	RPL27A
Binding Specificity:	AA 110-138, C-Term
Reactivity:	Human, Hamster
Host:	Rabbit
Clonality:	Polyclonal
Conjugate:	This RPL27A antibody is un-conjugated
Application:	Western Blotting (WB), Flow Cytometry (FACS), Immunohistochemistry (Paraffin-embedded Sections) (IHC (p))

Product Details

Immunogen:	This RPL27A antibody is generated from rabbits immunized with a KLH conjugated synthetic peptide between 110-138 amino acids from the C-terminal region of human RPL27A.
Clone:	RB30127
Isotype:	Ig Fraction
Predicted Reactivity:	B, Pr, M, Rat
Purification:	This antibody is purified through a protein A column, followed by peptide affinity purification.

Target Details

Target:	RPL27A
---------	--------

Target Details

Alternative Name:	RPL27A (RPL27A Products)
Background:	Ribosomes, the organelles that catalyze protein synthesis, consist of a small 40S subunit and a large 60S subunit. Together these subunits are composed of 4 RNA species and approximately 80 structurally distinct proteins. This gene encodes a ribosomal protein that is a component of the 60S subunit. The protein belongs to the L15P family of ribosomal proteins. It is located in the cytoplasm. Variable expression of this gene in colorectal cancers compared to adjacent normal tissues has been observed, although no correlation between the level of expression and the severity of the disease has been found. As is typical for genes encoding ribosomal proteins, multiple processed pseudogenes derived from this gene are dispersed through the genome.
Molecular Weight:	16561
Gene ID:	6157
NCBI Accession:	NP_000981
UniProt:	P46776

Application Details

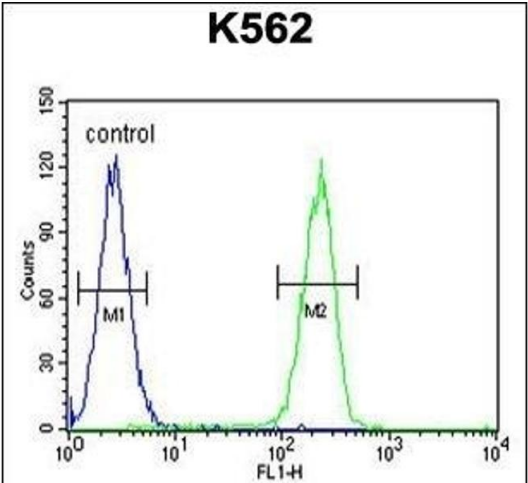
Application Notes:	WB: 1:1000. WB: 1:1000. IHC-P: 1:50~100. FC: 1:10~50
Restrictions:	For Research Use only

Handling

Format:	Liquid
Buffer:	Purified polyclonal antibody supplied in PBS with 0.09 % (W/V) sodium azide.
Preservative:	Sodium azide
Precaution of Use:	This product contains Sodium azide: a POISONOUS AND HAZARDOUS SUBSTANCE which should be handled by trained staff only.
Storage:	4 °C, -20 °C
Storage Comment:	Maintain refrigerated at 2-8 °C for up to 6 months. For long term storage store at -20 °C in small aliquots to prevent freeze-thaw cycles.
Expiry Date:	6 months

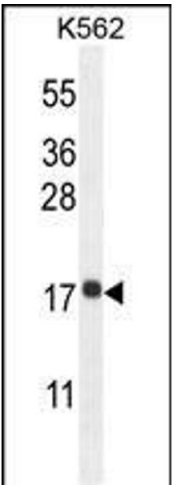
Product cited in: Alkhatabi, McLornan, Kulasekararaj, Malik, Seidl, Darling, Gaken, Mufti: "RPL27A is a target of miR-595 and may contribute to the myelodysplastic phenotype through ribosomal dysgenesis." in: **Oncotarget**, Vol. 7, Issue 30, pp. 47875-47890, (2018) ([PubMed](#)).

Images



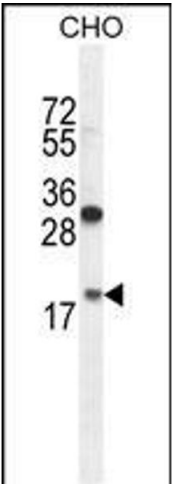
Flow Cytometry

Image 1. RPL27A Antibody (C-term) (ABIN654891 and ABIN2844541) flow cytometric analysis of K562 cells (right histogram) compared to a negative control cell (left histogram). FITC-conjugated goat-anti-rabbit secondary antibodies were used for the analysis.



Western Blotting

Image 2. RPL27A Antibody (C-term) (ABIN654891 and ABIN2844541) western blot analysis in K562 cell line lysates (35 µg/lane). This demonstrates the RPL27A antibody detected the RPL27A protein (arrow).



Western Blotting

Image 3. RPL27A Antibody (C-term) (ABIN654891 and ABIN2844541) western blot analysis in CHO cell line lysates (35 µg/lane). This demonstrates the RPL27A antibody detected the RPL27A protein (arrow).

Images

Please check the [product details page](#) for more images. Overall 4 images are available for ABIN654891.