

Datasheet for ABIN654896

anti-Complement Factor H antibody (AA 751-780)**5** Images[Go to Product page](#)

Overview

Quantity:	400 µL
Target:	Complement Factor H (CFH)
Binding Specificity:	AA 751-780
Reactivity:	Human
Host:	Rabbit
Clonality:	Polyclonal
Conjugate:	This Complement Factor H antibody is un-conjugated
Application:	Western Blotting (WB), Immunofluorescence (IF), Immunohistochemistry (Paraffin-embedded Sections) (IHC (p))

Product Details

Immunogen:	This CFH antibody is generated from rabbits immunized with a KLH conjugated synthetic peptide between 751-780 amino acids of human CFH.
Clone:	RB18698
Isotype:	IgG
Purification:	This antibody is purified through a protein A column, followed by peptide affinity purification.

Target Details

Target:	Complement Factor H (CFH)
Alternative Name:	CFH (CFH Products)

Target Details

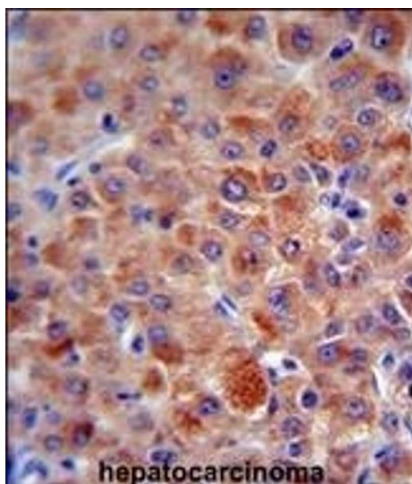
Background:	This gene is a member of the Regulator of Complement Activation (RCA) gene cluster and encodes a protein with twenty short consensus repeat (SCR) domains. This protein is secreted into the bloodstream and has an essential role in the regulation of complement activation, restricting this innate defense mechanism to microbial infections. Mutations in this gene have been associated with hemolytic-uremic syndrome (HUS) and chronic hypocomplementemic nephropathy. Alternate transcriptional splice variants, encoding different isoforms, have been characterized.
Molecular Weight:	139096
Gene ID:	3075
NCBI Accession:	NP_000177
UniProt:	P08603
Pathways:	Complement System, Cellular Response to Molecule of Bacterial Origin

Application Details

Application Notes:	IF: 1:25. IF: 1:25. WB: 1:2000. WB: 1:2000. IHC-P: 1:50~100
Restrictions:	For Research Use only

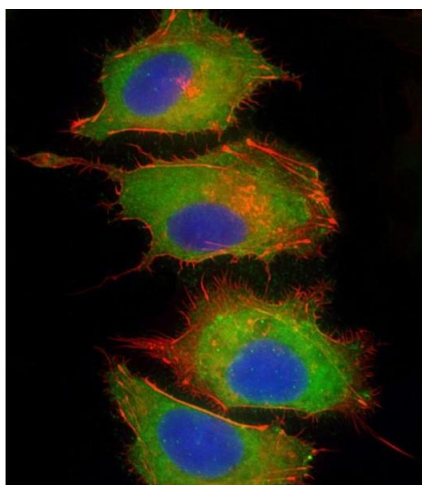
Handling

Format:	Liquid
Buffer:	Purified polyclonal antibody supplied in PBS with 0.09 % (W/V) sodium azide.
Preservative:	Sodium azide
Precaution of Use:	This product contains Sodium azide: a POISONOUS AND HAZARDOUS SUBSTANCE which should be handled by trained staff only.
Storage:	4 °C,-20 °C
Storage Comment:	Maintain refrigerated at 2-8 °C for up to 6 months. For long term storage store at -20 °C in small aliquots to prevent freeze-thaw cycles.
Expiry Date:	6 months



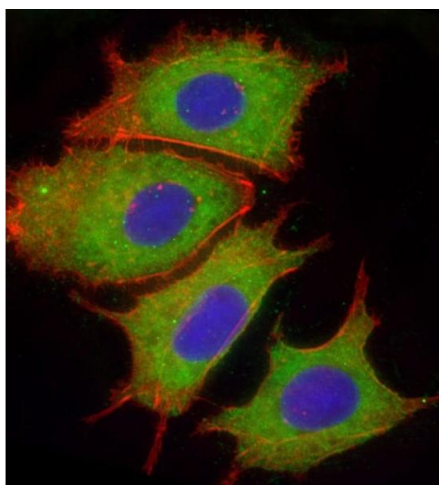
Immunohistochemistry (Paraffin-embedded Sections)

Image 1. CFH antibody (Center) (ABIN654896 and ABIN2844545) immunohistochemistry analysis in formalin fixed and paraffin embedded human hepatocarcinoma followed by peroxidase conjugation of the secondary antibody and DAB staining. This data demonstrates the use of the CFH antibody (Center) for immunohistochemistry. Clinical relevance has not been evaluated.



Immunofluorescence

Image 2. Immunofluorescent analysis of 4 % paraformaldehyde-fixed, 0.1 % Triton X-100 permeabilized HepG2 (human liver hepatocellular carcinoma cell line) cells labeling CFH with (ABIN654896 and ABIN2844545) at 1/25 dilution, followed by Dylight® 488-conjugated goat anti-rabbit IgG (1583138) secondary antibody at 1/200 dilution (green). Immunofluorescence image showing cytoplasm staining on HepG2 cell line. Cytoplasmic actin is detected with Dylight® 554 Phalloidin (OI17558410) at 1/100 dilution (red). The nuclear counter stain is DI (blue).



Immunofluorescence

Image 3. Immunofluorescent analysis of 4 % paraformaldehyde-fixed, 0.1 % Triton X-100 permeabilized HepG2 (human liver hepatocellular carcinoma cell line) cells labeling CFH with (ABIN654896 and ABIN2844545) at 1/25 dilution, followed by Dylight® 488-conjugated goat anti-rabbit IgG (1583138) secondary antibody at 1/200 dilution (green). Immunofluorescence image showing cytoplasm staining on HepG2 cell line. Cytoplasmic actin is detected with Dylight® 554 Phalloidin (OI17558410) at 1/100 dilution (red). The nuclear counter stain is DI (blue).

Please check the [product details page](#) for more images. Overall 5 images are available for ABIN654896.