

Datasheet for ABIN654906

anti-SMYD1 antibody (C-Term)[Go to Product page](#)**2** Images

Overview

Quantity:	400 µL
Target:	SMYD1
Binding Specificity:	AA 420-449, C-Term
Reactivity:	Human
Host:	Rabbit
Clonality:	Polyclonal
Conjugate:	This SMYD1 antibody is un-conjugated
Application:	Western Blotting (WB), Flow Cytometry (FACS)

Product Details

Immunogen:	This SMYD1 antibody is generated from rabbits immunized with a KLH conjugated synthetic peptide between 420-449 amino acids from the C-terminal region of human SMYD1.
Clone:	RB20548
Isotype:	Ig Fraction
Purification:	This antibody is purified through a protein A column, followed by peptide affinity purification.

Target Details

Target:	SMYD1
Alternative Name:	SMYD1 (SMYD1 Products)
Background:	Acts as a transcriptional repressor. Essential for cardiomyocyte differentiation and cardiac

Target Details

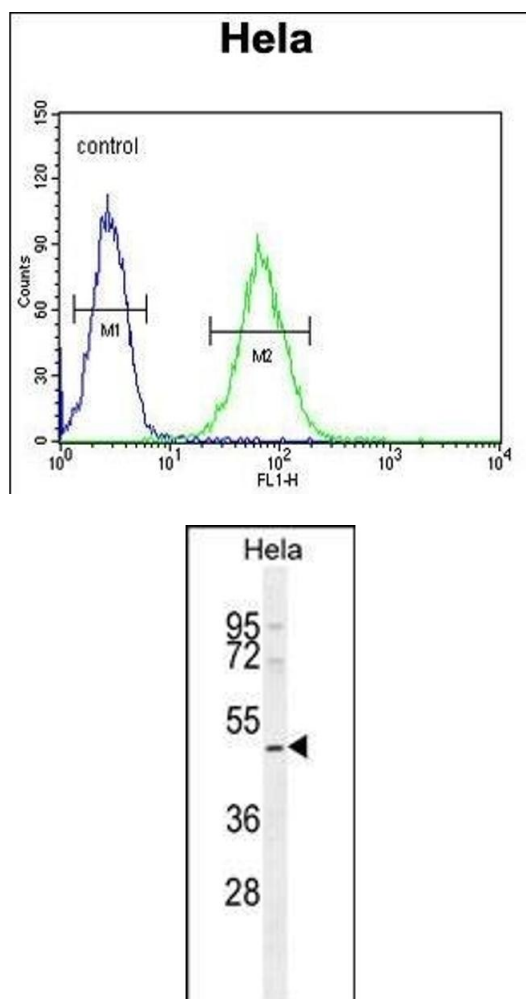
	morphogenesis (By similarity).
Molecular Weight:	56617
Gene ID:	150572
NCBI Accession:	NP_938015
UniProt:	Q8NB12
Pathways:	Regulation of Muscle Cell Differentiation, Skeletal Muscle Fiber Development

Application Details

Application Notes:	WB: 1:1000. FC: 1:10~50
Restrictions:	For Research Use only

Handling

Format:	Liquid
Buffer:	Purified polyclonal antibody supplied in PBS with 0.09 % (W/V) sodium azide.
Preservative:	Sodium azide
Precaution of Use:	This product contains Sodium azide: a POISONOUS AND HAZARDOUS SUBSTANCE which should be handled by trained staff only.
Storage:	4 °C,-20 °C
Storage Comment:	Maintain refrigerated at 2-8 °C for up to 6 months. For long term storage store at -20 °C in small aliquots to prevent freeze-thaw cycles.
Expiry Date:	6 months



Flow Cytometry

Image 1. SMYD1 Antibody (C-term) (ABIN654906 and ABIN2844554) flow cytometric analysis of HeLa cells (right histogram) compared to a negative control cell (left histogram). FITC-conjugated goat-anti-rabbit secondary antibodies were used for the analysis.

Western Blotting

Image 2. SMYD1 Antibody (C-term) (ABIN654906 and ABIN2844554) western blot analysis in HeLa cell line lysates (35 μ g/lane). This demonstrates the SMYD1 antibody detected the SMYD1 protein (arrow).