

Datasheet for ABIN654909  
**anti-ERCC8 antibody (AA 210-238)**

## 2 Images

[Go to Product page](#)

## Overview

Quantity:	400 µL
Target:	ERCC8
Binding Specificity:	AA 210-238
Reactivity:	Human, Mouse
Host:	Rabbit
Clonality:	Polyclonal
Conjugate:	This ERCC8 antibody is un-conjugated
Application:	Western Blotting (WB), Immunohistochemistry (Paraffin-embedded Sections) (IHC (p))

## Product Details

Immunogen:	This ERCC8 antibody is generated from rabbits immunized with a KLH conjugated synthetic peptide between 210-238 amino acids from the Central region of human ERCC8.
Clone:	RB20950
Isotype:	Ig Fraction
Purification:	This antibody is purified through a protein A column, followed by peptide affinity purification.

## Target Details

Target:	ERCC8
Alternative Name:	ERCC8 ( <a href="#">ERCC8 Products</a> )
Background:	This gene encodes a WD repeat protein, which interacts with Cockayne syndrome type B (CSB)

## Target Details

protein and with p44 protein, a subunit of the RNA polymerase II transcription factor IIH. Mutations in this gene have been identified in patients with hereditary disease Cockayne syndrome (CS). CS cells are abnormally sensitive to ultraviolet radiation and are defective in the repair of transcriptionally active genes.

Molecular Weight: 44055

Gene ID: 1161

NCBI Accession: [NP\\_000073](#)

UniProt: [Q13216](#)

Pathways: [DNA Damage Repair](#), [Positive Regulation of Response to DNA Damage Stimulus](#)

## Application Details

Application Notes: WB: 1:1000. IHC-P: 1:50~100

Restrictions: For Research Use only

## Handling

Format: Liquid

Buffer: Purified polyclonal antibody supplied in PBS with 0.09 % (W/V) sodium azide.

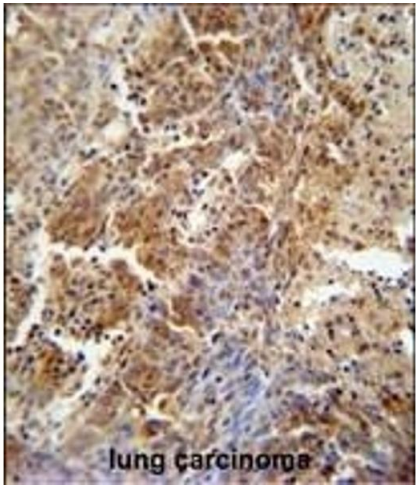
Preservative: Sodium azide

Precaution of Use: This product contains Sodium azide: a POISONOUS AND HAZARDOUS SUBSTANCE which should be handled by trained staff only.

Storage: 4 °C,-20 °C

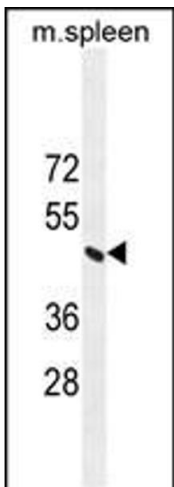
Storage Comment: Maintain refrigerated at 2-8 °C for up to 6 months. For long term storage store at -20 °C in small aliquots to prevent freeze-thaw cycles.

Expiry Date: 6 months



**Immunohistochemistry (Paraffin-embedded Sections)**

**Image 1.** ERCC8 antibody (Center) (ABIN654909 and ABIN2844556) immunohistochemistry analysis in formalin fixed and paraffin embedded human lung carcinoma followed by peroxidase conjugation of the secondary antibody and DAB staining. This data demonstrates the use of the ERCC8 antibody (Center) for immunohistochemistry. Clinical relevance has not been evaluated.



**Western Blotting**

**Image 2.** ERCC8 Antibody (Center) (ABIN654909 and ABIN2844556) western blot analysis in mouse spleen tissue lysates (35 µg/lane). This demonstrates the ERCC8 antibody detected the ERCC8 protein (arrow).