

Datasheet for ABIN654920

anti-alpha-Mannosidase II antibody (AA 456-482)[Go to Product page](#)**2** Images

Overview

Quantity:	400 µL
Target:	alpha-Mannosidase II (MAN2A1)
Binding Specificity:	AA 456-482
Reactivity:	Human
Host:	Rabbit
Clonality:	Polyclonal
Conjugate:	This alpha-Mannosidase II antibody is un-conjugated
Application:	Western Blotting (WB), Flow Cytometry (FACS)

Product Details

Immunogen:	This MAN2A1 antibody is generated from rabbits immunized with a KLH conjugated synthetic peptide between 456-482 amino acids from the Central region of human MAN2A1.
Clone:	RB22470
Isotype:	Ig Fraction
Purification:	This antibody is purified through a protein A column, followed by peptide affinity purification.

Target Details

Target:	alpha-Mannosidase II (MAN2A1)
Alternative Name:	MAN2A1 (MAN2A1 Products)
Background:	This gene encodes a protein which is a member of family 38 of the glycosyl hydrolases. The

Target Details

protein is located in the Golgi and catalyzes the final hydrolytic step in the asparagine-linked oligosaccharide (N-glycan) maturation pathway. Mutations in the mouse homolog of this gene have been shown to cause a systemic autoimmune disease similar to human systemic lupus erythematosus.

Molecular Weight: 131141

Gene ID: 4124

NCBI Accession: [NP_002363](#)

UniProt: [Q16706](#)

Application Details

Application Notes: WB: 1:1000. FC: 1:10~50

Restrictions: For Research Use only

Handling

Format: Liquid

Buffer: Purified polyclonal antibody supplied in PBS with 0.09 % (W/V) sodium azide.

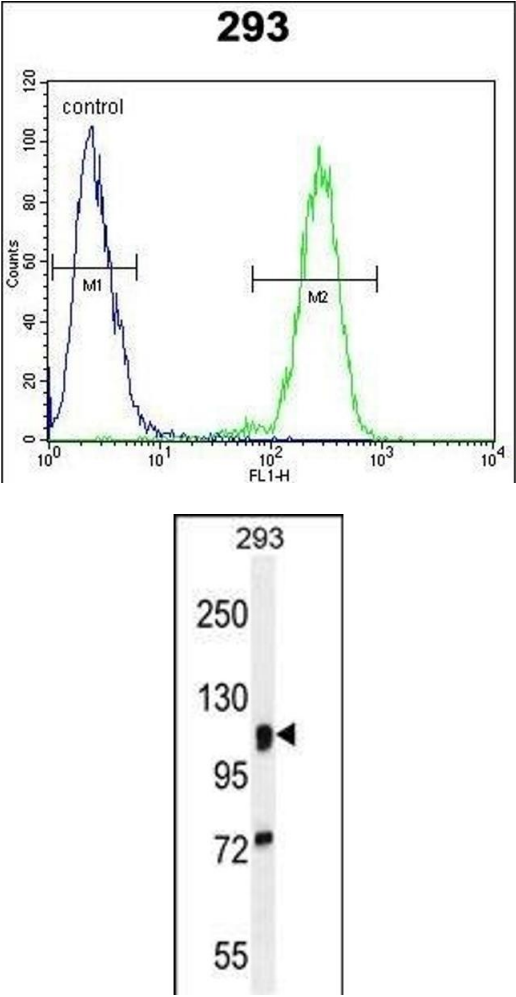
Preservative: Sodium azide

Precaution of Use: This product contains Sodium azide: a POISONOUS AND HAZARDOUS SUBSTANCE which should be handled by trained staff only.

Storage: 4 °C, -20 °C

Storage Comment: Maintain refrigerated at 2-8 °C for up to 6 months. For long term storage store at -20 °C in small aliquots to prevent freeze-thaw cycles.

Expiry Date: 6 months



Flow Cytometry

Image 1. N2A1 Antibody (Center) (ABIN654920 and ABIN2844565) flow cytometric analysis of 293 cells (right histogram) compared to a negative control cell (left histogram).FITC-conjugated goat-anti-rabbit secondary antibodies were used for the analysis.

Western Blotting

Image 2. N2A1 Antibody (Center) (ABIN654920 and ABIN2844565) western blot analysis in 293 cell line lysates (35 µg/lane).This demonstrates the N2A1 antibody detected the N2A1 protein (arrow).