



[Go to Product page](#)

Datasheet for ABIN654924

anti-KIAA1324-Like antibody (N-Term)

4 Images

Overview

Quantity:	400 µL
Target:	KIAA1324-Like (KIAA1324L)
Binding Specificity:	AA 109-138, N-Term
Reactivity:	Human, Mouse
Host:	Rabbit
Clonality:	Polyclonal
Conjugate:	This KIAA1324-Like antibody is un-conjugated
Application:	Western Blotting (WB), Flow Cytometry (FACS), Immunohistochemistry (Paraffin-embedded Sections) (IHC (p))

Product Details

Immunogen:	This KIAA1324L antibody is generated from rabbits immunized with a KLH conjugated synthetic peptide between 109-138 amino acids from the N-terminal region of human KIAA1324L.
Clone:	RB23967
Isotype:	Ig Fraction
Predicted Reactivity:	B
Purification:	This antibody is purified through a protein A column, followed by peptide affinity purification.

Target Details

Target:	KIAA1324-Like (KIAA1324L)
---------	---------------------------

Target Details

Alternative Name: [KIAA1324L \(KIAA1324L Products\)](#)

Molecular Weight: 113842

Gene ID: 222223

NCBI Accession: [NP_001136221, NP_689961](#)

UniProt: [A8MWY0](#)

Application Details

Application Notes: WB: 1:1000. WB: 1:1000. IHC-P: 1:50~100. FC: 1:10~50

Restrictions: For Research Use only

Handling

Format: Liquid

Buffer: Purified polyclonal antibody supplied in PBS with 0.09 % (W/V) sodium azide.

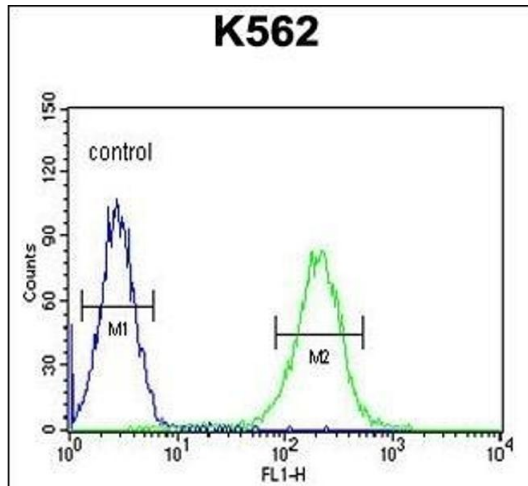
Preservative: Sodium azide

Precaution of Use: This product contains Sodium azide: a POISONOUS AND HAZARDOUS SUBSTANCE which should be handled by trained staff only.

Storage: 4 °C, -20 °C

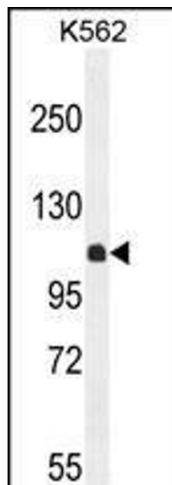
Storage Comment: Maintain refrigerated at 2-8 °C for up to 6 months. For long term storage store at -20 °C in small aliquots to prevent freeze-thaw cycles.

Expiry Date: 6 months



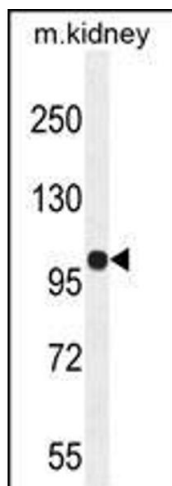
Flow Cytometry

Image 1. KIL Antibody (N-term) (ABIN654924 and ABIN2844567) flow cytometric analysis of K562 cells (right histogram) compared to a negative control cell (left histogram). FITC-conjugated goat-anti-rabbit secondary antibodies were used for the analysis.



Western Blotting

Image 2. KIL Antibody (N-term) (ABIN654924 and ABIN2844567) western blot analysis in K562 cell line lysates (35 µg/lane). This demonstrates the KIL antibody detected the KIL protein (arrow).



Western Blotting

Image 3. KIL Antibody (N-term) (ABIN654924 and ABIN2844567) western blot analysis in mouse kidney tissue lysates (35 µg/lane). This demonstrates the KIL antibody detected the KIL protein (arrow).

Please check the [product details page](#) for more images. Overall 4 images are available for ABIN654924.