

Datasheet for ABIN654925
anti-FOSL2 antibody (AA 95-122)

3 Images

[Go to Product page](#)

Overview

Quantity:	400 µL
Target:	FOSL2
Binding Specificity:	AA 95-122
Reactivity:	Human, Hamster
Host:	Rabbit
Clonality:	Polyclonal
Conjugate:	This FOSL2 antibody is un-conjugated
Application:	Western Blotting (WB), Immunohistochemistry (Paraffin-embedded Sections) (IHC (p))

Product Details

Immunogen:	This FOSL2 antibody is generated from rabbits immunized with a KLH conjugated synthetic peptide between 95-122 amino acids from the Central region of human FOSL2.
Clone:	RB24397
Isotype:	Ig Fraction
Predicted Reactivity:	C, M, Rat
Purification:	This antibody is purified through a protein A column, followed by peptide affinity purification.

Target Details

Target:	FOSL2
Alternative Name:	FOSL2 (FOSL2 Products)

Target Details

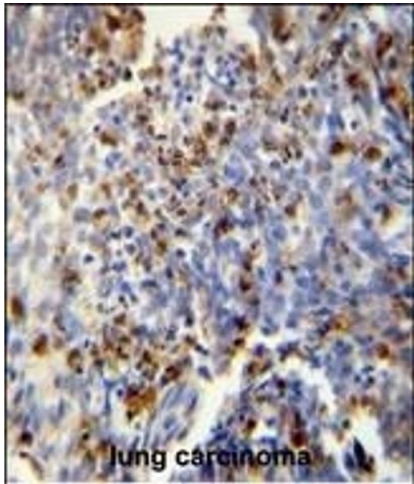
Background:	The Fos gene family consists of 4 members: FOS, FOSB, FOSL1, and FOSL2. These genes encode leucine zipper proteins that can dimerize with proteins of the JUN family, thereby forming the transcription factor complex AP-1. As such, the FOS proteins have been implicated as regulators of cell proliferation, differentiation, and transformation.
Molecular Weight:	35193
Gene ID:	2355
NCBI Accession:	NP_005244
UniProt:	P15408
Pathways:	Feeding Behaviour , Photoperiodism

Application Details

Application Notes:	WB: 1:1000. WB: 1:1000. IHC-P: 1:50~100
Restrictions:	For Research Use only

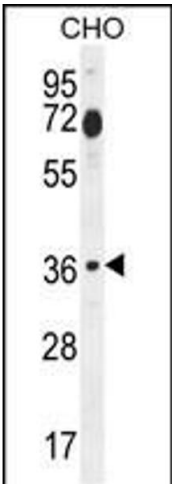
Handling

Format:	Liquid
Buffer:	Purified polyclonal antibody supplied in PBS with 0.09 % (W/V) sodium azide.
Preservative:	Sodium azide
Precaution of Use:	This product contains Sodium azide: a POISONOUS AND HAZARDOUS SUBSTANCE which should be handled by trained staff only.
Storage:	4 °C,-20 °C
Storage Comment:	Maintain refrigerated at 2-8 °C for up to 6 months. For long term storage store at -20 °C in small aliquots to prevent freeze-thaw cycles.
Expiry Date:	6 months



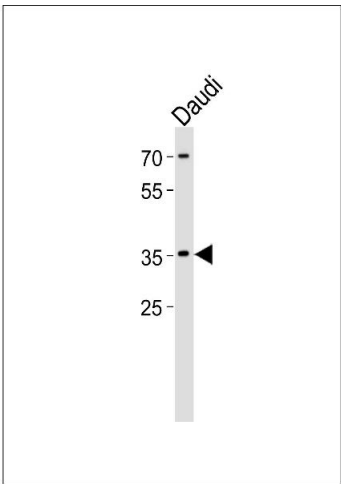
Immunohistochemistry (Paraffin-embedded Sections)

Image 1. FOSL2 antibody (Center) (ABIN654925 and ABIN2844568) immunohistochemistry analysis in formalin fixed and paraffin embedded human lung carcinoma followed by peroxidase conjugation of the secondary antibody and DAB staining. This data demonstrates the use of the FOSL2 antibody (Center) for immunohistochemistry. Clinical relevance has not been evaluated.



Western Blotting

Image 2. FOSL2 Antibody (Center) (ABIN654925 and ABIN2844568) western blot analysis in CHO cell line lysates (35 µg/lane). This demonstrates the FOSL2 antibody detected the FOSL2 protein (arrow).



Western Blotting

Image 3. Western blot analysis of lysate from Daudi cell line, using FOSL2 Antibody (Center) (ABIN654925 and ABIN2844568). (ABIN654925 and ABIN2844568) was diluted at 1:1000. A goat anti-rabbit IgG H&L(HRP) at 1:5000 dilution was used as the secondary antibody. Lysate at 35 µg.