

Datasheet for ABIN654930
anti-WIPF2 antibody (C-Term)[Go to Product page](#)

2 Images

Overview

Quantity:	400 µL
Target:	WIPF2
Binding Specificity:	AA 392-419, C-Term
Reactivity:	Human
Host:	Rabbit
Clonality:	Polyclonal
Conjugate:	This WIPF2 antibody is un-conjugated
Application:	Western Blotting (WB), Immunohistochemistry (Paraffin-embedded Sections) (IHC (p))

Product Details

Immunogen:	This WIPF2 antibody is generated from rabbits immunized with a KLH conjugated synthetic peptide between 392-419 amino acids from the C-terminal region of human WIPF2.
Clone:	RB24689
Isotype:	Ig Fraction
Purification:	This antibody is purified through a protein A column, followed by peptide affinity purification.

Target Details

Target:	WIPF2
Alternative Name:	WIPF2 (WIPF2 Products)
Background:	This gene encodes a WASP interacting protein (WIP)-related protein. It has been shown that

Target Details

this protein has a role in the WASP-mediated organization of the actin cytoskeleton and that this protein is a potential link between the activated platelet-derived growth factor receptor and the actin polymerization machinery.

Molecular Weight: 46289

Gene ID: 147179

NCBI Accession: [NP_573571](#)

UniProt: [Q8TF74](#)

Application Details

Application Notes: WB: 1:1000. IHC-P: 1:50~100

Restrictions: For Research Use only

Handling

Format: Liquid

Buffer: Purified polyclonal antibody supplied in PBS with 0.09 % (W/V) sodium azide.

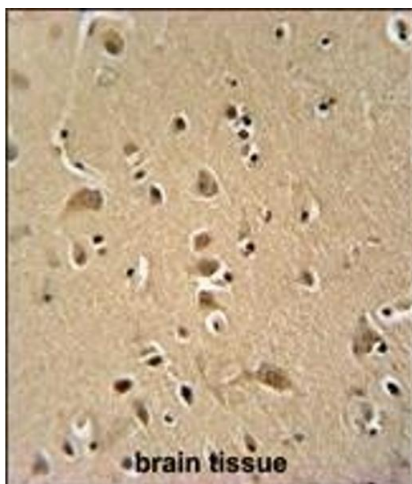
Preservative: Sodium azide

Precaution of Use: This product contains Sodium azide: a POISONOUS AND HAZARDOUS SUBSTANCE which should be handled by trained staff only.

Storage: 4 °C, -20 °C

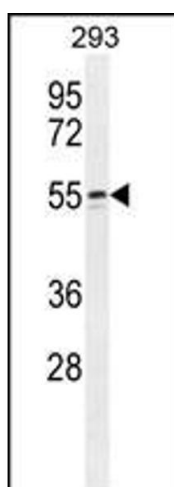
Storage Comment: Maintain refrigerated at 2-8 °C for up to 6 months. For long term storage store at -20 °C in small aliquots to prevent freeze-thaw cycles.

Expiry Date: 6 months



Immunohistochemistry (Paraffin-embedded Sections)

Image 1. WIPF2 antibody (C-term) (ABIN654930 and ABIN2844573) immunohistochemistry analysis in formalin fixed and paraffin embedded human brain tissue followed by peroxidase conjugation of the secondary antibody and DAB staining. This data demonstrates the use of the WIPF2 antibody (C-term) for immunohistochemistry. Clinical relevance has not been evaluated.



Western Blotting

Image 2. WIPF2 Antibody (C-term) (ABIN654930 and ABIN2844573) western blot analysis in 293 cell line lysates (35 µg/lane). This demonstrates the WIPF2 antibody detected the WIPF2 protein (arrow).