



[Go to Product page](#)

Datasheet for ABIN654933
anti-SWT1 antibody (N-Term)

2 Images

Overview

| | |
|----------------------|--|
| Quantity: | 400 µL |
| Target: | SWT1 |
| Binding Specificity: | AA 286-314, N-Term |
| Reactivity: | Human |
| Host: | Rabbit |
| Clonality: | Polyclonal |
| Conjugate: | This SWT1 antibody is un-conjugated |
| Application: | Western Blotting (WB), Flow Cytometry (FACS) |

Product Details

| | |
|---------------|--|
| Immunogen: | This CA026 antibody is generated from rabbits immunized with a KLH conjugated synthetic peptide between 286-314 amino acids from the N-terminal region of human CA026. |
| Clone: | RB24947 |
| Isotype: | Ig Fraction |
| Purification: | This antibody is purified through a protein A column, followed by peptide affinity purification. |

Target Details

| | |
|-------------------|---|
| Target: | SWT1 |
| Alternative Name: | CA026 (SWT1 Products) |
| Molecular Weight: | 103222 |

Target Details

| | |
|-----------------|--|
| Gene ID: | 54823 |
| NCBI Accession: | NP_001098988 , NP_060143 |
| UniProt: | Q5T5J6 |

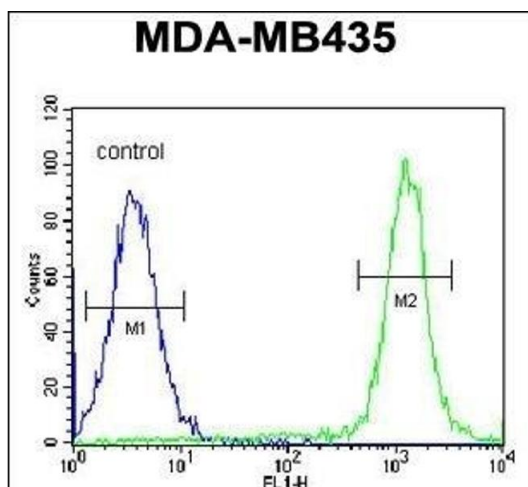
Application Details

| | |
|--------------------|-------------------------|
| Application Notes: | WB: 1:1000. FC: 1:10~50 |
| Restrictions: | For Research Use only |

Handling

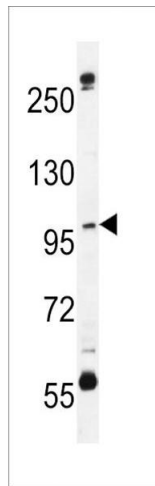
| | |
|--------------------|--|
| Format: | Liquid |
| Buffer: | Purified polyclonal antibody supplied in PBS with 0.09 % (W/V) sodium azide. |
| Preservative: | Sodium azide |
| Precaution of Use: | This product contains Sodium azide: a POISONOUS AND HAZARDOUS SUBSTANCE which should be handled by trained staff only. |
| Storage: | 4 °C, -20 °C |
| Storage Comment: | Maintain refrigerated at 2-8 °C for up to 6 months. For long term storage store at -20 °C in small aliquots to prevent freeze-thaw cycles. |
| Expiry Date: | 6 months |

Images



Flow Cytometry

Image 1. C Antibody (N-term) (ABIN654933 and ABIN2844576) flow cytometric analysis of MDA-M cells (right histogram) compared to a negative control cell (left histogram). FITC-conjugated goat-anti-rabbit secondary antibodies were used for the analysis.



Western Blotting

Image 2. C Antibody (N-term) (ABIN654933 and ABIN2844576) western blot analysis in MDA-M cell line lysates (35 µg/lane). This demonstrates the C antibody detected the C protein (arrow).