



[Go to Product page](#)

Datasheet for ABIN654941
anti-BCLAF1 antibody (C-Term)

2 Images

Overview

Quantity:	400 µL
Target:	BCLAF1
Binding Specificity:	AA 658-687, C-Term
Reactivity:	Human
Host:	Rabbit
Clonality:	Polyclonal
Conjugate:	This BCLAF1 antibody is un-conjugated
Application:	Western Blotting (WB), Immunohistochemistry (Paraffin-embedded Sections) (IHC (p))

Product Details

Immunogen:	This BCLAF1 antibody is generated from rabbits immunized with a KLH conjugated synthetic peptide between 658-687 amino acids from the C-terminal region of human BCLAF1.
Clone:	RB25182
Isotype:	Ig Fraction
Purification:	This antibody is purified through a protein A column, followed by peptide affinity purification.

Target Details

Target:	BCLAF1
Alternative Name:	BCLAF1 (BCLAF1 Products)
Background:	This gene encodes a transcriptional repressor that interacts with several members of the BCL2

Target Details

family of proteins. Overexpression of this protein induces apoptosis, which can be suppressed by co-expression of BCL2 proteins. The protein localizes to dot-like structures throughout the nucleus, and redistributes to a zone near the nuclear envelope in cells undergoing apoptosis. Multiple transcript variants encoding different isoforms have been found for this gene.

Molecular Weight: 106122

Gene ID: 9774

NCBI Accession: [NP_001070908](#), [NP_001070909](#), [NP_055554](#)

UniProt: [Q9NYF8](#)

Pathways: [Positive Regulation of Response to DNA Damage Stimulus](#)

Application Details

Application Notes: WB: 1:1000. IHC-P: 1:50~100

Restrictions: For Research Use only

Handling

Format: Liquid

Buffer: Purified polyclonal antibody supplied in PBS with 0.09 % (W/V) sodium azide.

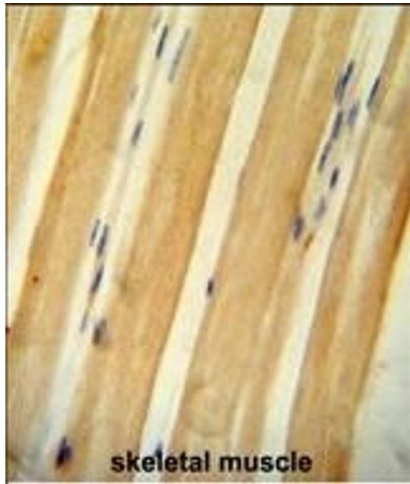
Preservative: Sodium azide

Precaution of Use: This product contains Sodium azide: a POISONOUS AND HAZARDOUS SUBSTANCE which should be handled by trained staff only.

Storage: 4 °C,-20 °C

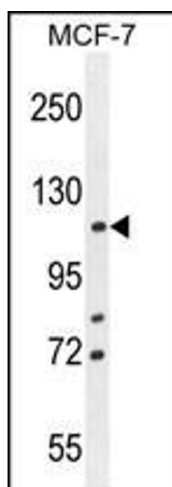
Storage Comment: Maintain refrigerated at 2-8 °C for up to 6 months. For long term storage store at -20 °C in small aliquots to prevent freeze-thaw cycles.

Expiry Date: 6 months



Immunohistochemistry (Paraffin-embedded Sections)

Image 1. BCLAF1 antibody (C-term) (ABIN654941 and ABIN2844582) immunohistochemistry analysis in formalin fixed and paraffin embedded human skeletal muscle followed by peroxidase conjugation of the secondary antibody and DAB staining. This data demonstrates the use of the BCLAF1 antibody (C-term) for immunohistochemistry. Clinical relevance has not been evaluated.



Western Blotting

Image 2. BCLAF1 Antibody (C-term) (ABIN654941 and ABIN2844582) western blot analysis in MCF-7 cell line lysates (35 µg/lane). This demonstrates the BCLAF1 antibody detected the BCLAF1 protein (arrow).