

Datasheet for ABIN654947

anti-Receptor Accessory Protein 4 antibody (C-Term)[Go to Product page](#)**1** Image

Overview

Quantity:	400 µL
Target:	Receptor Accessory Protein 4 (REEP4)
Binding Specificity:	AA 228-257, C-Term
Reactivity:	Human, Mouse
Host:	Rabbit
Clonality:	Polyclonal
Conjugate:	This Receptor Accessory Protein 4 antibody is un-conjugated
Application:	Western Blotting (WB)

Product Details

Immunogen:	This REEP4 antibody is generated from rabbits immunized with a KLH conjugated synthetic peptide between 228-257 amino acids from the C-terminal region of human REEP4.
Clone:	RB25317
Isotype:	Ig Fraction
Purification:	This antibody is purified through a protein A column, followed by peptide affinity purification.

Target Details

Target:	Receptor Accessory Protein 4 (REEP4)
Alternative Name:	REEP4 (REEP4 Products)
Background:	May enhance the cell surface expression of odorant receptors (By similarity).

Target Details

Molecular Weight:	29395
Gene ID:	80346
NCBI Accession:	NP_079508
UniProt:	Q9H6H4

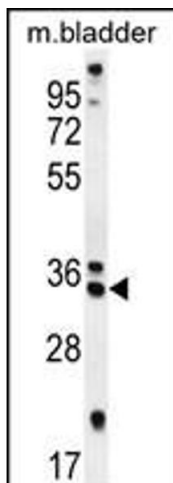
Application Details

Application Notes:	WB: 1:1000
Restrictions:	For Research Use only

Handling

Format:	Liquid
Buffer:	Purified polyclonal antibody supplied in PBS with 0.09 % (W/V) sodium azide.
Preservative:	Sodium azide
Precaution of Use:	This product contains Sodium azide: a POISONOUS AND HAZARDOUS SUBSTANCE which should be handled by trained staff only.
Storage:	4 °C,-20 °C
Storage Comment:	Maintain refrigerated at 2-8 °C for up to 6 months. For long term storage store at -20 °C in small aliquots to prevent freeze-thaw cycles.
Expiry Date:	6 months

Images



Western Blotting

Image 1. REEP4 Antibody (C-term) (ABIN654947 and ABIN2844588) western blot analysis in mouse bladder tissue lysates (35 µg/lane). This demonstrates the REEP4 antibody detected the REEP4 protein (arrow).