



[Go to Product page](#)

Datasheet for ABIN654949

## anti-FAM46D antibody (AA 210-239)

### 2 Images

#### Overview

Quantity:	400 µL
Target:	FAM46D
Binding Specificity:	AA 210-239
Reactivity:	Human
Host:	Rabbit
Clonality:	Polyclonal
Conjugate:	This FAM46D antibody is un-conjugated
Application:	Western Blotting (WB), Flow Cytometry (FACS)

#### Product Details

Immunogen:	This CT112 antibody is generated from rabbits immunized with a KLH conjugated synthetic peptide between 210-239 amino acids from the Central region of human CT112.
Clone:	RB25368
Isotype:	Ig Fraction
Predicted Reactivity:	M
Purification:	This antibody is purified through a protein A column, followed by peptide affinity purification.

#### Target Details

Target:	FAM46D
Alternative Name:	CT112 ( <a href="#">FAM46D Products</a> )

## Target Details

Molecular Weight:	47215
Gene ID:	140688
NCBI Accession:	<a href="#">NP_001243727</a> , <a href="#">NP_542183</a>
UniProt:	<a href="#">Q96MY1</a>

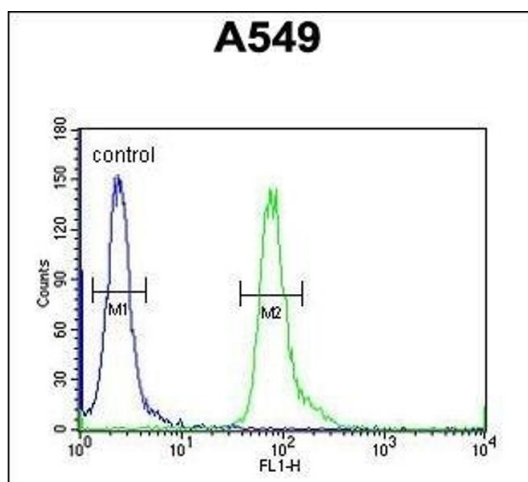
## Application Details

Application Notes:	WB: 1:1000. FC: 1:10~50
Restrictions:	For Research Use only

## Handling

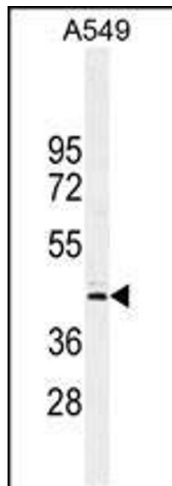
Format:	Liquid
Buffer:	Purified polyclonal antibody supplied in PBS with 0.09 % (W/V) sodium azide.
Preservative:	Sodium azide
Precaution of Use:	This product contains Sodium azide: a POISONOUS AND HAZARDOUS SUBSTANCE which should be handled by trained staff only.
Storage:	4 °C, -20 °C
Storage Comment:	Maintain refrigerated at 2-8 °C for up to 6 months. For long term storage store at -20 °C in small aliquots to prevent freeze-thaw cycles.
Expiry Date:	6 months

## Images



### Flow Cytometry

**Image 1.** C Antibody (Center) (ABIN654949 and ABIN2844590) flow cytometric analysis of A549 cells (right histogram) compared to a negative control cell (left histogram). FITC-conjugated goat-anti-rabbit secondary antibodies were used for the analysis.



### Western Blotting

**Image 2.** C Antibody (Center) (ABIN654949 and ABIN2844590) western blot analysis in A549 cell line lysates (35 µg/lane). This demonstrates the C antibody detected the C protein (arrow).