

Datasheet for ABIN654955  
**anti-TMEM168 antibody (C-Term)**[Go to Product page](#)

## 2 Images

## Overview

Quantity:	400 µL
Target:	TMEM168
Binding Specificity:	AA 558-587, C-Term
Reactivity:	Human
Host:	Rabbit
Clonality:	Polyclonal
Conjugate:	This TMEM168 antibody is un-conjugated
Application:	Western Blotting (WB), Flow Cytometry (FACS)

## Product Details

Immunogen:	This TM168 antibody is generated from rabbits immunized with a KLH conjugated synthetic peptide between 558-587 amino acids from the C-terminal region of human TM168.
Clone:	RB25486
Isotype:	Ig Fraction
Predicted Reactivity:	M, Rat
Purification:	This antibody is purified through a protein A column, followed by peptide affinity purification.

## Target Details

Target:	TMEM168
Alternative Name:	TM168 ( <a href="#">TMEM168 Products</a> )

## Target Details

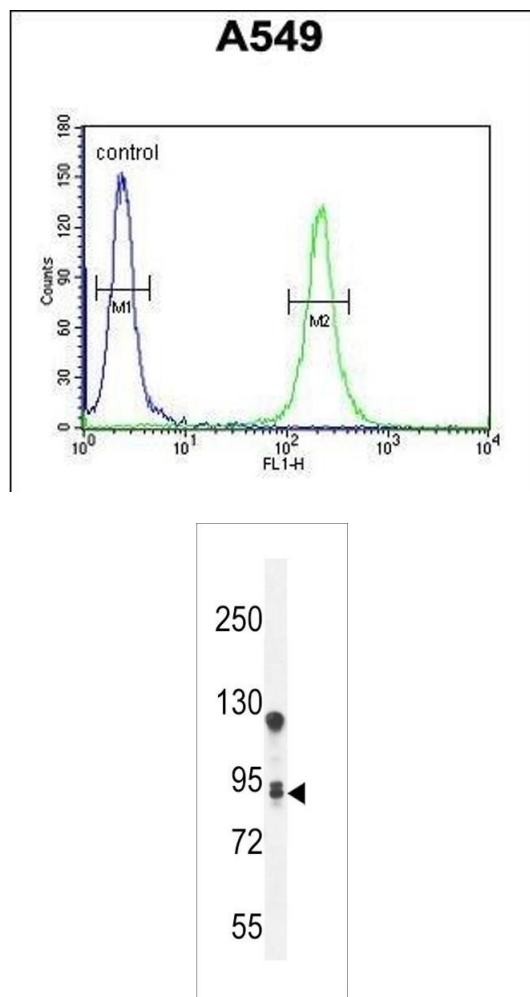
Background:	TMEM168 is a multi-pass membrane protein. It belongs to the TMEM168 family. The exact function of TMEM168 remains unknown.
Molecular Weight:	79755
Gene ID:	64418
NCBI Accession:	<a href="#">NP_071929</a>
UniProt:	<a href="#">Q9H0V1</a>

## Application Details

Application Notes:	WB: 1:1000. FC: 1:10~50
Restrictions:	For Research Use only

## Handling

Format:	Liquid
Buffer:	Purified polyclonal antibody supplied in PBS with 0.09 % (W/V) sodium azide.
Preservative:	Sodium azide
Precaution of Use:	This product contains Sodium azide: a POISONOUS AND HAZARDOUS SUBSTANCE which should be handled by trained staff only.
Storage:	4 °C,-20 °C
Storage Comment:	Maintain refrigerated at 2-8 °C for up to 6 months. For long term storage store at -20 °C in small aliquots to prevent freeze-thaw cycles.
Expiry Date:	6 months



### Flow Cytometry

**Image 1.** T Antibody (C-term) (ABIN654955 and ABIN2844595) flow cytometric analysis of A549 cells (right histogram) compared to a negative control cell (left histogram). FITC-conjugated goat-anti-rabbit secondary antibodies were used for the analysis.

### Western Blotting

**Image 2.** T Antibody (C-term) (ABIN654955 and ABIN2844595) western blot analysis in A549 cell line lysates (35  $\mu$ g/lane). This demonstrates the T antibody detected the T protein (arrow).