

Datasheet for ABIN654959

**anti-C18ORF25 antibody (AA 163-191)**[Go to Product page](#)**2** Images

## Overview

Quantity:	400 µL
Target:	C18ORF25
Binding Specificity:	AA 163-191
Reactivity:	Human, Mouse
Host:	Rabbit
Clonality:	Polyclonal
Conjugate:	This C18ORF25 antibody is un-conjugated
Application:	Western Blotting (WB), Immunohistochemistry (Paraffin-embedded Sections) (IHC (p))

## Product Details

Immunogen:	This CR025 antibody is generated from rabbits immunized with a KLH conjugated synthetic peptide between 163-191 amino acids from the Central region of human CR025.
Clone:	RB25503
Isotype:	Ig Fraction
Purification:	This antibody is purified through a protein A column, followed by peptide affinity purification.

## Target Details

Target:	C18ORF25
Alternative Name:	CR025 ( <a href="#">C18ORF25 Products</a> )
Background:	The exact function of C18orf25 remains unknown. There are two named isoforms.

## Target Details

Molecular Weight:	43395
Gene ID:	147339
NCBI Accession:	<a href="#">NP_001008240</a> , <a href="#">NP_659492</a>
UniProt:	<a href="#">Q96B23</a>

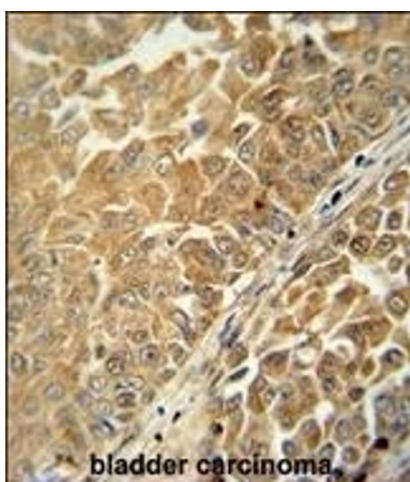
## Application Details

Application Notes:	WB: 1:1000. IHC-P: 1:50~100
Restrictions:	For Research Use only

## Handling

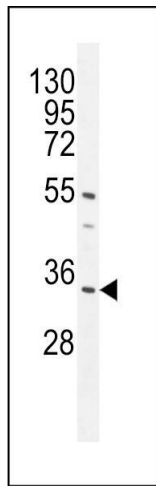
Format:	Liquid
Buffer:	Purified polyclonal antibody supplied in PBS with 0.09 % (W/V) sodium azide.
Preservative:	Sodium azide
Precaution of Use:	This product contains Sodium azide: a POISONOUS AND HAZARDOUS SUBSTANCE which should be handled by trained staff only.
Storage:	4 °C, -20 °C
Storage Comment:	Maintain refrigerated at 2-8 °C for up to 6 months. For long term storage store at -20 °C in small aliquots to prevent freeze-thaw cycles.
Expiry Date:	6 months

## Images



### Immunohistochemistry (Paraffin-embedded Sections)

**Image 1.** C antibody (Center) (ABIN654959 and ABIN2844598) immunohistochemistry analysis in formalin fixed and paraffin embedded human bladder carcinoma followed by peroxidase conjugation of the secondary antibody and DAB staining. This data demonstrates the use of the C antibody (Center) for immunohistochemistry. Clinical relevance has not been evaluated.



### Western Blotting

**Image 2.** C Antibody (Center) (ABIN654959 and ABIN2844598) western blot analysis in mouse heart tissue lysates (35 µg/lane). This demonstrates the C antibody detected the C protein (arrow).