

Datasheet for ABIN654964  
**anti-PPRC1 antibody (C-Term)**[Go to Product page](#)

## 2 Images

## Overview

Quantity:	400 µL
Target:	PPRC1
Binding Specificity:	AA 1636-1664, C-Term
Reactivity:	Human
Host:	Rabbit
Clonality:	Polyclonal
Conjugate:	This PPRC1 antibody is un-conjugated
Application:	Western Blotting (WB), Immunohistochemistry (Paraffin-embedded Sections) (IHC (p))

## Product Details

Immunogen:	This PPRC1 antibody is generated from rabbits immunized with a KLH conjugated synthetic peptide between 1636-1664 amino acids from the C-terminal region of human PPRC1.
Clone:	RB25731
Isotype:	Ig Fraction
Predicted Reactivity:	M
Purification:	This antibody is purified through a protein A column, followed by peptide affinity purification.

## Target Details

Target:	PPRC1
Alternative Name:	PPRC1 ( <a href="#">PPRC1 Products</a> )

## Target Details

**Background:** The protein encoded by this gene is similar to PPAR-gamma coactivator 1 (PPARGC1/PGC-1), a protein that can activate mitochondrial biogenesis in part through a direct interaction with nuclear respiratory factor 1 (NRF1). This protein has been shown to interact with NRF1. It is thought to be a functional relative of PPARGC1 that activates mitochondrial biogenesis through NRF1 in response to proliferative signals.

**Molecular Weight:** 177544

**Gene ID:** 23082

**NCBI Accession:** [NP\\_055877](#)

**UniProt:** [Q5VV67](#)

## Application Details

**Application Notes:** WB: 1:1000. IHC-P: 1:50~100

**Restrictions:** For Research Use only

## Handling

**Format:** Liquid

**Buffer:** Purified polyclonal antibody supplied in PBS with 0.09 % (W/V) sodium azide.

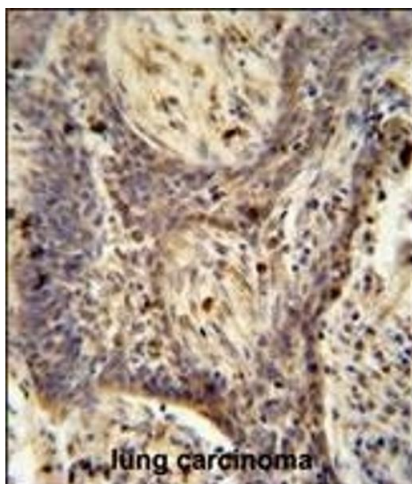
**Preservative:** Sodium azide

**Precaution of Use:** This product contains Sodium azide: a POISONOUS AND HAZARDOUS SUBSTANCE which should be handled by trained staff only.

**Storage:** 4 °C,-20 °C

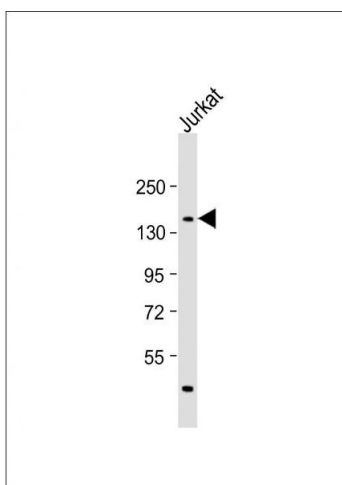
**Storage Comment:** Maintain refrigerated at 2-8 °C for up to 6 months. For long term storage store at -20 °C in small aliquots to prevent freeze-thaw cycles.

**Expiry Date:** 6 months



#### Immunohistochemistry (Paraffin-embedded Sections)

**Image 1.** RC1 antibody (C-term) (ABIN654964 and ABIN2844603) immunohistochemistry analysis in formalin fixed and paraffin embedded human lung carcinoma followed by peroxidase conjugation of the secondary antibody and DAB staining. This data demonstrates the use of the RC1 antibody (C-term) for immunohistochemistry. Clinical relevance has not been evaluated.



#### Western Blotting

**Image 2.** Anti-RC1 Antibody (C-term) at 1:1000 dilution + Jurkat whole cell lysate Lysates/proteins at 20 µg per lane. Secondary Goat Anti-Rabbit IgG, (H+L), Peroxidase conjugated at 1/10000 dilution. Predicted band size : 178 kDa Blocking/Dilution buffer: 5 % NFDm/TBST.