



[Go to Product page](#)

Datasheet for ABIN654971

## anti-C17orf59 antibody (AA 186-215)

### 1 Image

#### Overview

Quantity:	400 µL
Target:	C17orf59 (C17ORF59)
Binding Specificity:	AA 186-215
Reactivity:	Human
Host:	Rabbit
Clonality:	Polyclonal
Conjugate:	This C17orf59 antibody is un-conjugated
Application:	Western Blotting (WB)

#### Product Details

Immunogen:	This C17orf59 antibody is generated from rabbits immunized with a KLH conjugated synthetic peptide between 186-215 amino acids of human C17orf59.
Clone:	RB27797
Isotype:	IgG
Predicted Reactivity:	B, M, Rat
Purification:	This antibody is purified through a protein A column, followed by peptide affinity purification.

#### Target Details

Target:	C17orf59 (C17ORF59)
Alternative Name:	C17orf59 ( <a href="#">C17ORF59 Products</a> )

## Target Details

Molecular Weight:	37226
Gene ID:	54785
NCBI Accession:	<a href="#">NP_060092</a>
UniProt:	<a href="#">Q96GS4</a>

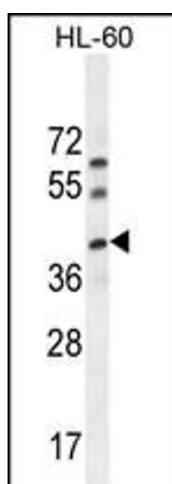
## Application Details

Application Notes:	WB: 1:1000
Restrictions:	For Research Use only

## Handling

Format:	Liquid
Buffer:	Purified polyclonal antibody supplied in PBS with 0.09 % (W/V) sodium azide.
Preservative:	Sodium azide
Precaution of Use:	This product contains Sodium azide: a POISONOUS AND HAZARDOUS SUBSTANCE which should be handled by trained staff only.
Storage:	4 °C,-20 °C
Storage Comment:	Maintain refrigerated at 2-8 °C for up to 6 months. For long term storage store at -20 °C in small aliquots to prevent freeze-thaw cycles.
Expiry Date:	6 months

## Images



### Western Blotting

**Image 1.** C17orf59 Antibody (Center) (ABIN654971 and ABIN2844609) western blot analysis in HL-60 cell line lysates (35 µg/lane). This demonstrates the C17orf59 antibody detected the C17orf59 protein (arrow).