

Datasheet for ABIN654977  
**anti-LRRC40 antibody (C-Term)**

## 3 Images

[Go to Product page](#)

## Overview

Quantity:	400 µL
Target:	LRRC40
Binding Specificity:	AA 343-371, C-Term
Reactivity:	Human
Host:	Rabbit
Clonality:	Polyclonal
Conjugate:	This LRRC40 antibody is un-conjugated
Application:	Western Blotting (WB), Flow Cytometry (FACS), Immunohistochemistry (Paraffin-embedded Sections) (IHC (p))

## Product Details

Immunogen:	This LRC40 antibody is generated from rabbits immunized with a KLH conjugated synthetic peptide between 343-371 amino acids from the C-terminal region of human LRC40.
Clone:	RB28114
Isotype:	Ig Fraction
Predicted Reactivity:	Pr, M
Purification:	This antibody is purified through a protein A column, followed by peptide affinity purification.

## Target Details

Target:	LRRC40
---------	--------

## Target Details

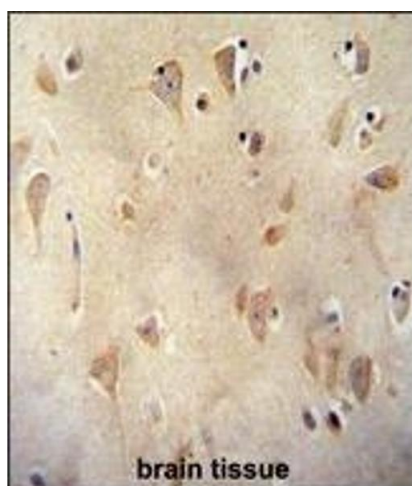
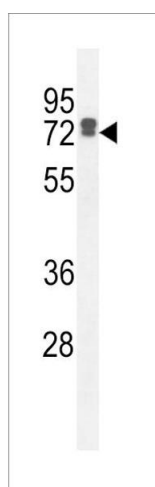
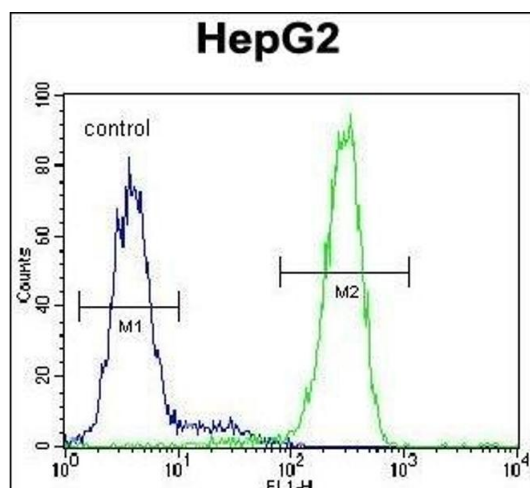
Alternative Name:	LRC40 ( <a href="#">LRRC40 Products</a> )
Molecular Weight:	68250
Gene ID:	55631
NCBI Accession:	<a href="#">NP_060238</a>
UniProt:	<a href="#">Q9H9A6</a>

## Application Details

Application Notes:	WB: 1:1000. IHC-P: 1:50~100. FC: 1:10~50
Restrictions:	For Research Use only

## Handling

Format:	Liquid
Buffer:	Purified polyclonal antibody supplied in PBS with 0.09 % (W/V) sodium azide.
Preservative:	Sodium azide
Precaution of Use:	This product contains Sodium azide: a POISONOUS AND HAZARDOUS SUBSTANCE which should be handled by trained staff only.
Storage:	4 °C,-20 °C
Storage Comment:	Maintain refrigerated at 2-8 °C for up to 6 months. For long term storage store at -20 °C in small aliquots to prevent freeze-thaw cycles.
Expiry Date:	6 months



### Flow Cytometry

**Image 1.** LRC40 Antibody (C-term) (ABIN654977 and ABIN2844617) flow cytometric analysis of HepG2 cells (right histogram) compared to a negative control cell (left histogram). FITC-conjugated goat-anti-rabbit secondary antibodies were used for the analysis.

### Western Blotting

**Image 2.** LRC40 Antibody (C-term) (ABIN654977 and ABIN2844617) western blot analysis in HepG2 cell line lysates (35 µg/lane). This demonstrates the LRC40 antibody detected the LRC40 protein (arrow).

### Immunohistochemistry (Paraffin-embedded Sections)

**Image 3.** LRC40 antibody (C-term) (ABIN654977 and ABIN2844617) immunohistochemistry analysis in formalin fixed and paraffin embedded human brain tissue followed by peroxidase conjugation of the secondary antibody and DAB staining. This data demonstrates the use of the LRC40 antibody (C-term) for immunohistochemistry. Clinical relevance has not been evaluated.