



[Go to Product page](#)

Datasheet for ABIN654987

anti-C6orf70 antibody (AA 346-375)

3 Images

Overview

Quantity:	400 µL
Target:	C6orf70 (ERMARD)
Binding Specificity:	AA 346-375
Reactivity:	Human
Host:	Rabbit
Clonality:	Polyclonal
Conjugate:	This C6orf70 antibody is un-conjugated
Application:	Western Blotting (WB), Flow Cytometry (FACS), Immunohistochemistry (Paraffin-embedded Sections) (IHC (p))

Product Details

Immunogen:	This C6orf70 antibody is generated from rabbits immunized with a KLH conjugated synthetic peptide between 346-375 amino acids from the Central region of human C6orf70.
Clone:	RB28235
Isotype:	Ig Fraction
Predicted Reactivity:	Pr
Purification:	This antibody is purified through a protein A column, followed by peptide affinity purification.

Target Details

Target:	C6orf70 (ERMARD)
---------	------------------

Target Details

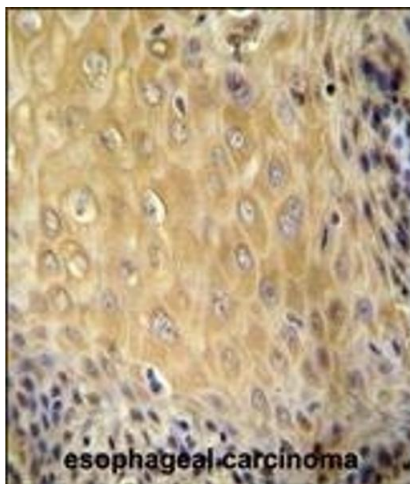
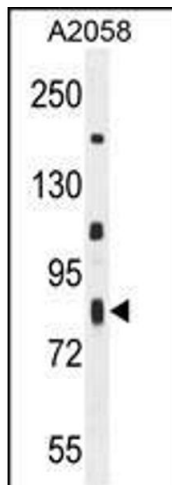
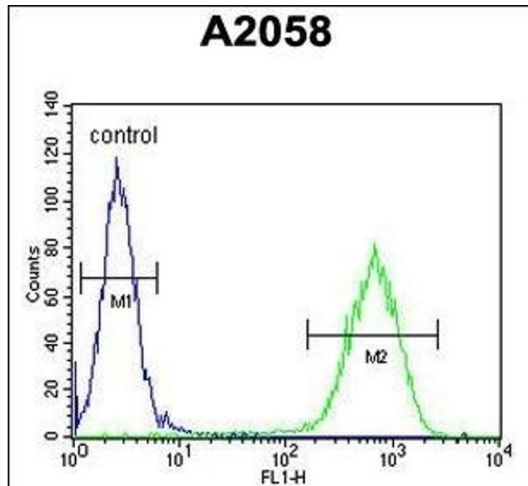
Alternative Name:	C6orf70 (ERMARD Products)
Molecular Weight:	77788
Gene ID:	55780
NCBI Accession:	NP_001265460 , NP_001265461 , NP_001265462 , NP_060811
UniProt:	Q5T6L9

Application Details

Application Notes:	WB: 1:1000. IHC-P: 1:50~100. FC: 1:10~50
Restrictions:	For Research Use only

Handling

Format:	Liquid
Buffer:	Purified polyclonal antibody supplied in PBS with 0.09 % (W/V) sodium azide.
Preservative:	Sodium azide
Precaution of Use:	This product contains Sodium azide: a POISONOUS AND HAZARDOUS SUBSTANCE which should be handled by trained staff only.
Storage:	4 °C,-20 °C
Storage Comment:	Maintain refrigerated at 2-8 °C for up to 6 months. For long term storage store at -20 °C in small aliquots to prevent freeze-thaw cycles.
Expiry Date:	6 months



Flow Cytometry

Image 1. C6orf70 Antibody (Center) (ABIN654987 and ABIN2844625) flow cytometric analysis of cells (right histogram) compared to a negative control cell (left histogram). FITC-conjugated goat-anti-rabbit secondary antibodies were used for the analysis.

Western Blotting

Image 2. C6orf70 Antibody (Center) (ABIN654987 and ABIN2844625) western blot analysis in cell line lysates (35 μ g/lane). This demonstrates the C6orf70 antibody detected the C6orf70 protein (arrow).

Immunohistochemistry (Paraffin-embedded Sections)

Image 3. C6orf70 antibody (Center) (ABIN654987 and ABIN2844625) immunohistochemistry analysis in formalin fixed and paraffin embedded human esophageal carcinoma followed by peroxidase conjugation of the secondary antibody and DAB staining. This data demonstrates the use of the C6orf70 antibody (Center) for immunohistochemistry. Clinical relevance has not been evaluated.