

Datasheet for ABIN654988

anti-RAB3IL1 antibody (C-Term)[Go to Product page](#)**2** Images

Overview

Quantity:	400 µL
Target:	RAB3IL1
Binding Specificity:	AA 297-325, C-Term
Reactivity:	Human
Host:	Rabbit
Clonality:	Polyclonal
Conjugate:	This RAB3IL1 antibody is un-conjugated
Application:	Western Blotting (WB), Flow Cytometry (FACS)

Product Details

Immunogen:	This RAB3IL1 antibody is generated from rabbits immunized with a KLH conjugated synthetic peptide between 297-325 amino acids from the C-terminal region of human RAB3IL1.
Clone:	RB28312
Isotype:	Ig Fraction
Purification:	This antibody is purified through a protein A column, followed by peptide affinity purification.

Target Details

Target:	RAB3IL1
Alternative Name:	RAB3IL1 (RAB3IL1 Products)
Background:	Guanine nucleotide exchange factor (GEF) for Rab3A, a GTPase that regulates synaptic vesicle

Target Details

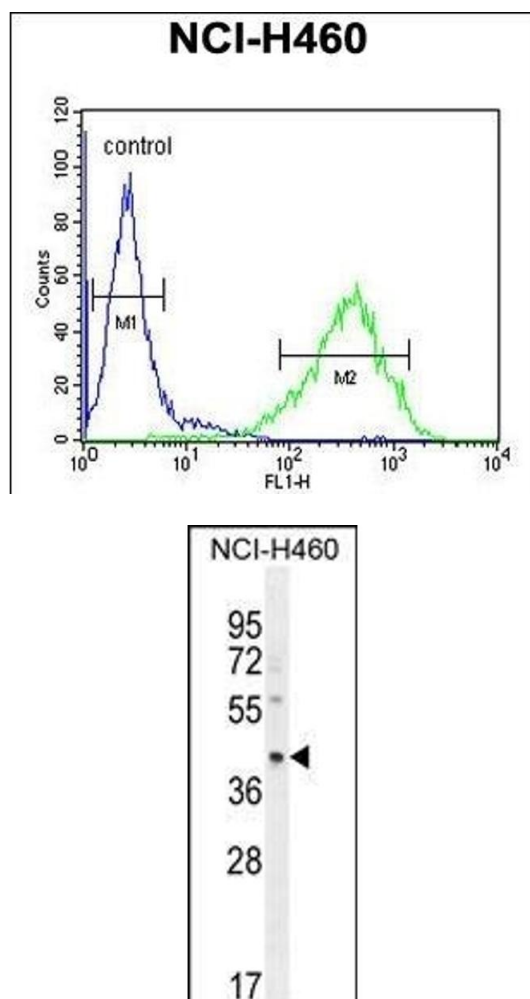
	exocytosis (By similarity).
Molecular Weight:	42637
Gene ID:	5866
NCBI Accession:	NP_001258615 , NP_037533
UniProt:	Q8TBN0

Application Details

Application Notes:	WB: 1:1000. FC: 1:10~50
Restrictions:	For Research Use only

Handling

Format:	Liquid
Buffer:	Purified polyclonal antibody supplied in PBS with 0.09 % (W/V) sodium azide.
Preservative:	Sodium azide
Precaution of Use:	This product contains Sodium azide: a POISONOUS AND HAZARDOUS SUBSTANCE which should be handled by trained staff only.
Storage:	4 °C,-20 °C
Storage Comment:	Maintain refrigerated at 2-8 °C for up to 6 months. For long term storage store at -20 °C in small aliquots to prevent freeze-thaw cycles.
Expiry Date:	6 months



Flow Cytometry

Image 1. RAB3IL1 Antibody (C-term) (ABIN654988 and ABIN2844626) flow cytometric analysis of NCI- cells (right histogram) compared to a negative control cell (left histogram). FITC-conjugated goat-anti-rabbit secondary antibodies were used for the analysis.

Western Blotting

Image 2. RAB3IL1 Antibody (C-term) (ABIN654988 and ABIN2844626) western blot analysis in NCI- cell line lysates (35 µg/lane). This demonstrates the RAB3IL1 antibody detected the RAB3IL1 protein (arrow).