



[Go to Product page](#)

Datasheet for ABIN654991

anti-CCDC17 antibody (C-Term)

3 Images

Overview

Quantity:	400 µL
Target:	CCDC17
Binding Specificity:	AA 481-509, C-Term
Reactivity:	Human
Host:	Rabbit
Clonality:	Polyclonal
Conjugate:	This CCDC17 antibody is un-conjugated
Application:	Western Blotting (WB), Flow Cytometry (FACS), Immunohistochemistry (Paraffin-embedded Sections) (IHC (p))

Product Details

Immunogen:	This CCDC17 antibody is generated from rabbits immunized with a KLH conjugated synthetic peptide between 481-509 amino acids from the C-terminal region of human CCDC17.
Clone:	RB28340
Isotype:	Ig Fraction
Purification:	This antibody is purified through a protein A column, followed by peptide affinity purification.

Target Details

Target:	CCDC17
Alternative Name:	CCDC17 (CCDC17 Products)

Target Details

Molecular Weight:	67721
Gene ID:	149483
NCBI Accession:	NP_001108410 , NP_001177111
UniProt:	Q96LX7

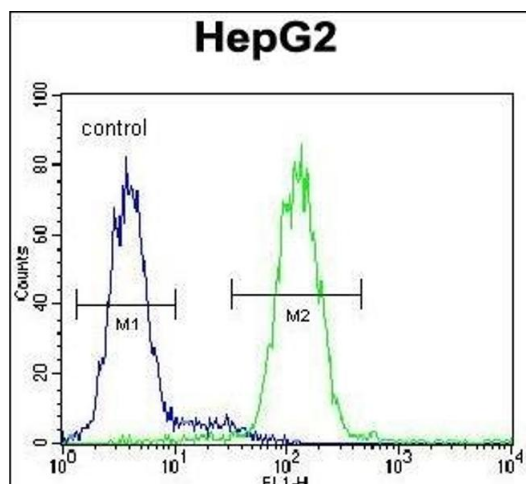
Application Details

Application Notes:	WB: 1:1000. IHC-P: 1:50~100. FC: 1:10~50
Restrictions:	For Research Use only

Handling

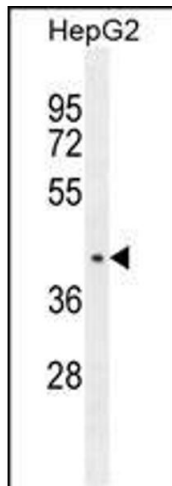
Format:	Liquid
Buffer:	Purified polyclonal antibody supplied in PBS with 0.09 % (W/V) sodium azide.
Preservative:	Sodium azide
Precaution of Use:	This product contains Sodium azide: a POISONOUS AND HAZARDOUS SUBSTANCE which should be handled by trained staff only.
Storage:	4 °C, -20 °C
Storage Comment:	Maintain refrigerated at 2-8 °C for up to 6 months. For long term storage store at -20 °C in small aliquots to prevent freeze-thaw cycles.
Expiry Date:	6 months

Images



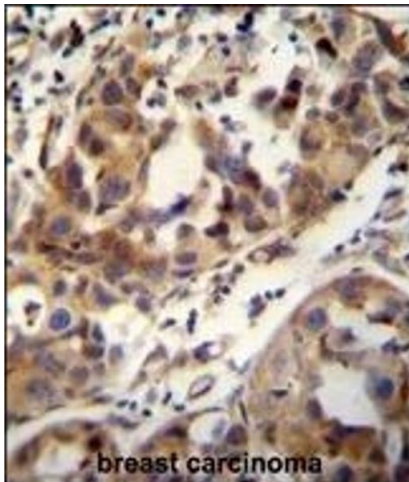
Flow Cytometry

Image 1. CCDC17 Antibody (C-term) (ABIN654991 and ABIN2844627) flow cytometric analysis of HepG2 cells (right histogram) compared to a negative control cell (left histogram). FITC-conjugated goat-anti-rabbit secondary antibodies were used for the analysis.



Western Blotting

Image 2. CCDC17 Antibody (C-term) (ABIN654991 and ABIN2844627) western blot analysis in HepG2 cell line lysates (35 µg/lane). This demonstrates the CCDC17 antibody detected the CCDC17 protein (arrow).



Immunohistochemistry (Paraffin-embedded Sections)

Image 3. CCDC17 antibody (C-term) (ABIN654991 and ABIN2844627) immunohistochemistry analysis in formalin fixed and paraffin embedded human breast carcinoma followed by peroxidase conjugation of the secondary antibody and DAB staining. This data demonstrates the use of the CCDC17 antibody (C-term) for immunohistochemistry. Clinical relevance has not been evaluated.