



[Go to Product page](#)

Datasheet for ABIN654992

anti-CCDC39 antibody (C-Term)

2 Images

Overview

Quantity:	400 µL
Target:	CCDC39
Binding Specificity:	AA 770-798, C-Term
Reactivity:	Human, Mouse, Hamster
Host:	Rabbit
Clonality:	Polyclonal
Conjugate:	This CCDC39 antibody is un-conjugated
Application:	Western Blotting (WB)

Product Details

Immunogen:	This CCDC39 antibody is generated from rabbits immunized with a KLH conjugated synthetic peptide between 770-798 amino acids from the C-terminal region of human CCDC39.
Clone:	RB28344
Isotype:	Ig Fraction
Purification:	This antibody is purified through a protein A column, followed by peptide affinity purification.

Target Details

Target:	CCDC39
Alternative Name:	CCDC39 (CCDC39 Products)
Molecular Weight:	109901

Target Details

Gene ID: 339829

NCBI Accession: [NP_852091](#)

UniProt: [Q9UFE4](#)

Application Details

Application Notes: WB: 1:1000. WB: 1:1000

Restrictions: For Research Use only

Handling

Format: Liquid

Buffer: Purified polyclonal antibody supplied in PBS with 0.09 % (W/V) sodium azide.

Preservative: Sodium azide

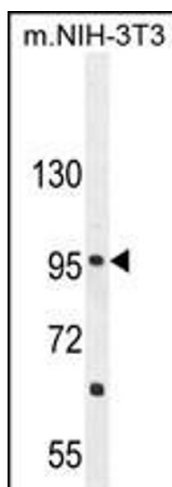
Precaution of Use: This product contains Sodium azide: a POISONOUS AND HAZARDOUS SUBSTANCE which should be handled by trained staff only.

Storage: 4 °C, -20 °C

Storage Comment: Maintain refrigerated at 2-8 °C for up to 6 months. For long term storage store at -20 °C in small aliquots to prevent freeze-thaw cycles.

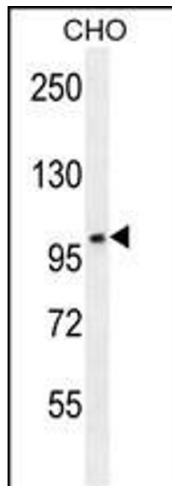
Expiry Date: 6 months

Images



Western Blotting

Image 1. CCDC39 Antibody (C-term) (ABIN654992 and ABIN2844628) western blot analysis in mouse NIH-3T3 cell line lysates (35 µg/lane). This demonstrates the CCDC39 antibody detected the CCDC39 protein (arrow).



Western Blotting

Image 2. CCDC39 Antibody (C-term) (ABIN654992 and ABIN2844628) western blot analysis in CHO cell line lysates (35 µg/lane). This demonstrates the CCDC39 antibody detected the CCDC39 protein (arrow).