



[Go to Product page](#)

Datasheet for ABIN654995
anti-TIGD3 antibody (C-Term)

3 Images

Overview

Quantity:	400 µL
Target:	TIGD3
Binding Specificity:	AA 378-407, C-Term
Reactivity:	Human
Host:	Rabbit
Clonality:	Polyclonal
Conjugate:	This TIGD3 antibody is un-conjugated
Application:	Western Blotting (WB), Flow Cytometry (FACS), Immunohistochemistry (Paraffin-embedded Sections) (IHC (p))

Product Details

Immunogen:	This TIGD3 antibody is generated from rabbits immunized with a KLH conjugated synthetic peptide between 378-407 amino acids from the C-terminal region of human TIGD3.
Clone:	RB28383
Isotype:	Ig Fraction
Purification:	This antibody is purified through a protein A column, followed by peptide affinity purification.

Target Details

Target:	TIGD3
Alternative Name:	TIGD3 (TIGD3 Products)

Target Details

Background: The protein encoded by this gene belongs to the tigger subfamily of the pogo superfamily of DNA-mediated transposons in humans. These proteins are related to DNA transposons found in fungi and nematodes, and more distantly to the Tc1 and mariner transposases. They are also very similar to the major mammalian centromere protein B. The exact function of this gene is not known.

Molecular Weight: 52027

Gene ID: 220359

NCBI Accession: [NP_663771](#)

UniProt: [Q6B0B8](#)

Application Details

Application Notes: WB: 1:1000. IHC-P: 1:50~100. FC: 1:10~50

Restrictions: For Research Use only

Handling

Format: Liquid

Buffer: Purified polyclonal antibody supplied in PBS with 0.09 % (W/V) sodium azide.

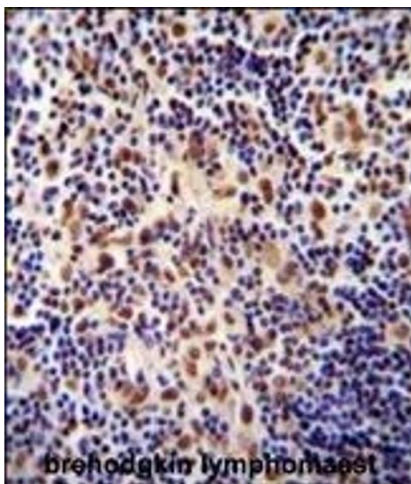
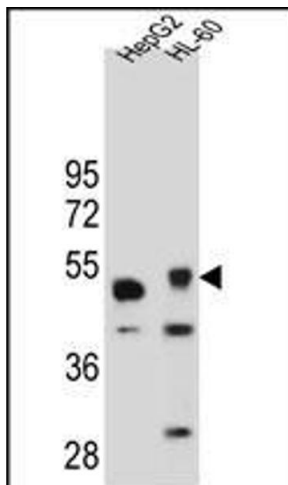
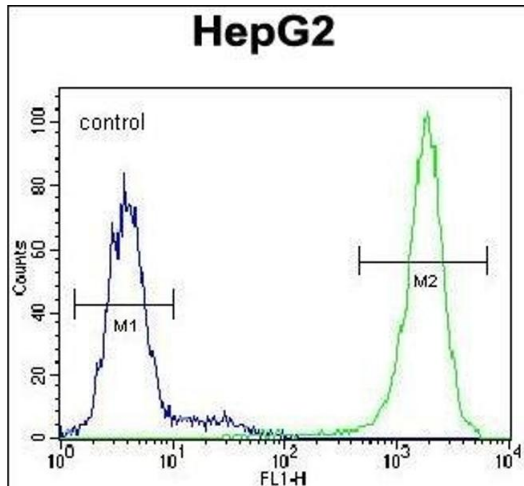
Preservative: Sodium azide

Precaution of Use: This product contains Sodium azide: a POISONOUS AND HAZARDOUS SUBSTANCE which should be handled by trained staff only.

Storage: 4 °C,-20 °C

Storage Comment: Maintain refrigerated at 2-8 °C for up to 6 months. For long term storage store at -20 °C in small aliquots to prevent freeze-thaw cycles.

Expiry Date: 6 months



Flow Cytometry

Image 1. TIGD3 Antibody (C-term) (ABIN654995 and ABIN2844630) flow cytometric analysis of HepG2 cells (right histogram) compared to a negative control cell (left histogram). FITC-conjugated goat-anti-rabbit secondary antibodies were used for the analysis.

Western Blotting

Image 2. TIGD3 Antibody (C-term) (ABIN654995 and ABIN2844630) western blot analysis in HepG2 and HL-60 cell line lysates (35 µg/lane). This demonstrates the TIGD3 antibody detected the TIGD3 protein (arrow).

Immunohistochemistry (Paraffin-embedded Sections)

Image 3. TIGD3 antibody (C-term) (ABIN654995 and ABIN2844630) immunohistochemistry analysis in formalin fixed and paraffin embedded human Hodgkin lymphoma followed by peroxidase conjugation of the secondary antibody and DAB staining. This data demonstrates the use of the TIGD3 antibody (C-term) for immunohistochemistry. Clinical relevance has not been evaluated.