

Datasheet for ABIN654998

## anti-GNL3L antibody (N-Term)

### 2 Images



[Go to Product page](#)

### Overview

Quantity:	400 µL
Target:	GNL3L
Binding Specificity:	AA 102-130, N-Term
Reactivity:	Human
Host:	Rabbit
Clonality:	Polyclonal
Conjugate:	This GNL3L antibody is un-conjugated
Application:	Western Blotting (WB), Flow Cytometry (FACS)

### Product Details

Immunogen:	This GNL3L antibody is generated from rabbits immunized with a KLH conjugated synthetic peptide between 102-130 amino acids from the N-terminal region of human GNL3L.
Clone:	RB28467
Isotype:	Ig Fraction
Predicted Reactivity:	M
Purification:	This antibody is purified through a protein A column, followed by peptide affinity purification.

### Target Details

Target:	GNL3L
Alternative Name:	GNL3L ( <a href="#">GNL3L Products</a> )

## Target Details

---

**Background:** The protein encoded by this gene appears to be a nucleolar GTPase that is essential for ribosomal pre-rRNA processing and cell proliferation. Two transcript variants encoding the same protein have been found for this gene.

---

**Molecular Weight:** 65573

---

**Gene ID:** 54552

---

**NCBI Accession:** [NP\\_001171748](#), [NP\\_061940](#)

---

**UniProt:** [Q9NVN8](#)

---

## Application Details

---

**Application Notes:** WB: 1:1000. FC: 1:10~50

---

**Restrictions:** For Research Use only

---

## Handling

---

**Format:** Liquid

---

**Buffer:** Purified polyclonal antibody supplied in PBS with 0.09 % (W/V) sodium azide.

---

**Preservative:** Sodium azide

---

**Precaution of Use:** This product contains Sodium azide: a POISONOUS AND HAZARDOUS SUBSTANCE which should be handled by trained staff only.

---

**Storage:** 4 °C, -20 °C

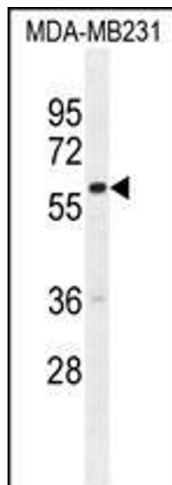
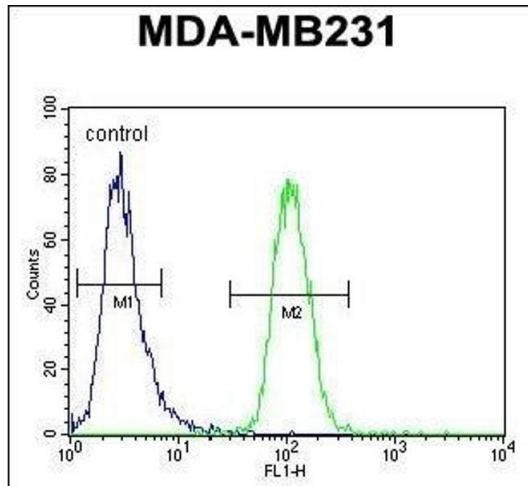
---

**Storage Comment:** Maintain refrigerated at 2-8 °C for up to 6 months. For long term storage store at -20 °C in small aliquots to prevent freeze-thaw cycles.

---

**Expiry Date:** 6 months

---



### Flow Cytometry

**Image 1.** GNL3L Antibody (N-term) (ABIN654998 and ABIN2844632) flow cytometric analysis of MDA-M cells (right histogram) compared to a negative control cell (left histogram). FITC-conjugated goat-anti-rabbit secondary antibodies were used for the analysis.

### Western Blotting

**Image 2.** GNL3L Antibody (N-term) (ABIN654998 and ABIN2844632) western blot analysis in MDA-M cell line lysates (35 µg/lane). This demonstrates the GNL3L antibody detected the GNL3L protein (arrow).