



Datasheet for ABIN654999

anti-CYB561D1 antibody (C-Term)



[Go to Product page](#)

3 Images

Overview

Quantity:	400 µL
Target:	CYB561D1
Binding Specificity:	AA 200-229, C-Term
Reactivity:	Human, Mouse
Host:	Rabbit
Clonality:	Polyclonal
Conjugate:	This CYB561D1 antibody is un-conjugated
Application:	Western Blotting (WB), Flow Cytometry (FACS), Immunohistochemistry (Paraffin-embedded Sections) (IHC (p))

Product Details

Immunogen:	This CYB561D1 antibody is generated from rabbits immunized with a KLH conjugated synthetic peptide between 200-229 amino acids from the C-terminal region of human CYB561D1.
Clone:	RB28497
Isotype:	Ig Fraction
Purification:	This antibody is purified through a protein A column, followed by peptide affinity purification.

Target Details

Target:	CYB561D1
Alternative Name:	CYB561D1 (CYB561D1 Products)

Target Details

Molecular Weight:	25424
Gene ID:	284613
NCBI Accession:	NP_001127872 , NP_001127874 , NP_872386
UniProt:	Q8N8Q1

Application Details

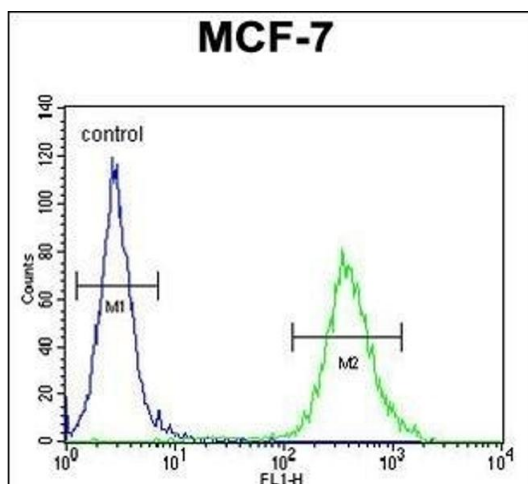
Application Notes: WB: 1:1000. IHC-P: 1:50~100. FC: 1:10~50

Restrictions: For Research Use only

Handling

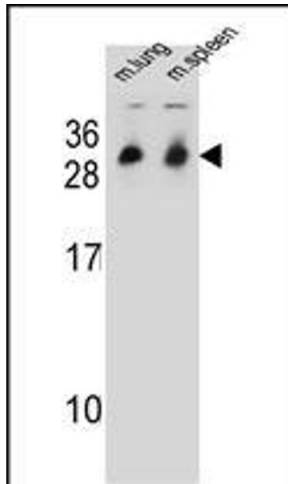
Format:	Liquid
Buffer:	Purified polyclonal antibody supplied in PBS with 0.09 % (W/V) sodium azide.
Preservative:	Sodium azide
Precaution of Use:	This product contains Sodium azide: a POISONOUS AND HAZARDOUS SUBSTANCE which should be handled by trained staff only.
Storage:	4 °C, -20 °C
Storage Comment:	Maintain refrigerated at 2-8 °C for up to 6 months. For long term storage store at -20 °C in small aliquots to prevent freeze-thaw cycles.
Expiry Date:	6 months

Images



Flow Cytometry

Image 1. CYB561D1 Antibody (C-term) (ABIN654999 and ABIN2844633) flow cytometric analysis of MCF-7 cells (right histogram) compared to a negative control cell (left histogram). FITC-conjugated goat-anti-rabbit secondary antibodies were used for the analysis.



Western Blotting

Image 2. CYB561D1 Antibody (C-term) (ABIN654999 and ABIN2844633) western blot analysis in mouse lung,spleen tissue lysates (35 µg/lane).This demonstrates the CYB561D1 antibody detected the CYB561D1 protein (arrow).



Immunohistochemistry (Paraffin-embedded Sections)

Image 3. CYB561D1 antibody (C-term) (ABIN654999 and ABIN2844633) immunohistochemistry analysis in formalin fixed and paraffin embedded human brain tissue followed by peroxidase conjugation of the secondary antibody and DAB staining. This data demonstrates the use of the CYB561D1 antibody (C-term) for immunohistochemistry. Clinical relevance has not been evaluated.