

Datasheet for ABIN655000
anti-ICAM2 antibody (AA 191-218)[Go to Product page](#)

2 Images

Overview

Quantity:	400 µL
Target:	ICAM2
Binding Specificity:	AA 191-218
Reactivity:	Human
Host:	Rabbit
Clonality:	Polyclonal
Conjugate:	This ICAM2 antibody is un-conjugated
Application:	Western Blotting (WB), Flow Cytometry (FACS)

Product Details

Immunogen:	This ICAM2 antibody is generated from rabbits immunized with a KLH conjugated synthetic peptide between 191-218 amino acids from the Central region of human ICAM2.
Clone:	RB28558
Isotype:	Ig Fraction
Purification:	This antibody is purified through a protein A column, followed by peptide affinity purification.

Target Details

Target:	ICAM2
Alternative Name:	ICAM2 (ICAM2 Products)
Background:	The protein encoded by this gene is a member of the intercellular adhesion molecule (ICAM)

Target Details

family. All ICAM proteins are type I transmembrane glycoproteins, contain 2-9 immunoglobulin-like C2-type domains, and bind to the leukocyte adhesion LFA-1 protein. This protein may play a role in lymphocyte recirculation by blocking LFA-1-dependent cell adhesion. It mediates adhesive interactions important for antigen-specific immune response, NK-cell mediated clearance, lymphocyte recirculation, and other cellular interactions important for immune response and surveillance. Several transcript variants encoding the same protein have been found for this gene.

Molecular Weight: 30654

Gene ID: 3384

NCBI Accession: [NP_000864](#), [NP_001093256](#), [NP_001093257](#), [NP_001093258](#), [NP_001093259](#)

UniProt: [P13598](#)

Application Details

Application Notes: WB: 1:1000. FC: 1:10~50

Restrictions: For Research Use only

Handling

Format: Liquid

Buffer: Purified polyclonal antibody supplied in PBS with 0.09 % (W/V) sodium azide.

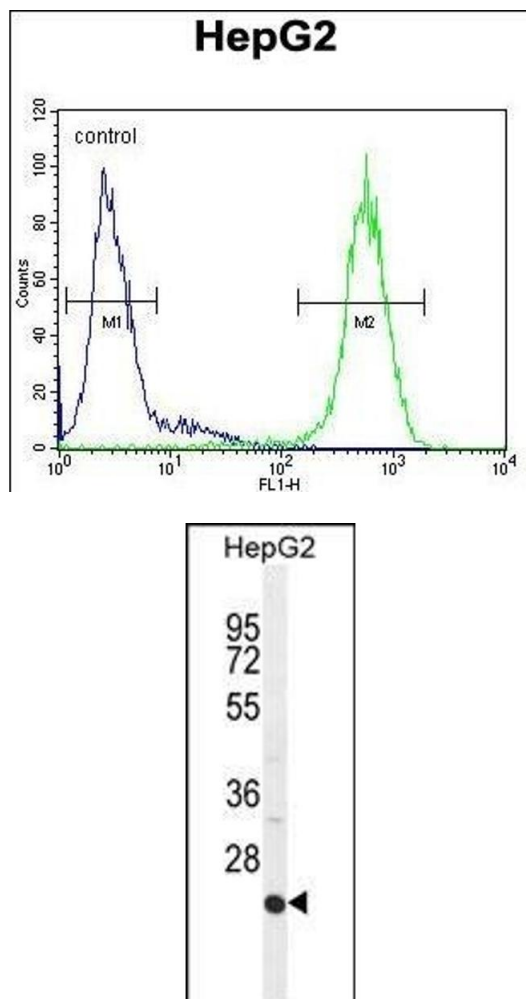
Preservative: Sodium azide

Precaution of Use: This product contains Sodium azide: a POISONOUS AND HAZARDOUS SUBSTANCE which should be handled by trained staff only.

Storage: 4 °C, -20 °C

Storage Comment: Maintain refrigerated at 2-8 °C for up to 6 months. For long term storage store at -20 °C in small aliquots to prevent freeze-thaw cycles.

Expiry Date: 6 months



Flow Cytometry

Image 1. IC Antibody (Center) (ABIN655000 and ABIN2844634) flow cytometric analysis of HepG2 cells (right histogram) compared to a negative control cell (left histogram). FITC-conjugated goat-anti-rabbit secondary antibodies were used for the analysis.

Western Blotting

Image 2. IC Antibody (Center) (ABIN655000 and ABIN2844634) western blot analysis in HepG2 cell line lysates (35 µg/lane). This demonstrates the IC antibody detected the IC protein (arrow).