

Datasheet for ABIN655001
anti-IL1R2 antibody (AA 273-300)[Go to Product page](#)

1 Image

Overview

Quantity:	400 µL
Target:	IL1R2
Binding Specificity:	AA 273-300
Reactivity:	Human
Host:	Rabbit
Clonality:	Polyclonal
Conjugate:	This IL1R2 antibody is un-conjugated
Application:	Western Blotting (WB)

Product Details

Immunogen:	This IL1R2 antibody is generated from rabbits immunized with a KLH conjugated synthetic peptide between 273-300 amino acids from the Central region of human IL1R2.
Clone:	RB28565
Isotype:	Ig Fraction
Purification:	This antibody is purified through a protein A column, followed by peptide affinity purification.

Target Details

Target:	IL1R2
Alternative Name:	IL1R2 (IL1R2 Products)
Background:	The protein encoded by this gene is a cytokine receptor that belongs to the interleukin 1

Target Details

receptor family. This protein binds interleukin alpha (IL1A), interleukin beta (IL1B), and interleukin 1 receptor, type I (IL1R1/IL1RA), and acts as a decoy receptor that inhibits the activity of its ligands. Interleukin 4 (IL4) is reported to antagonize the activity of interleukin 1 by inducing the expression and release of this cytokine. This gene and three other genes form a cytokine receptor gene cluster on chromosome 2q12. Two alternatively spliced transcript variants encoding the same protein have been reported.

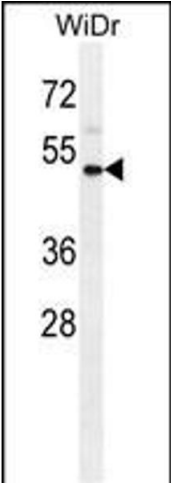
Molecular Weight:	45421
Gene ID:	7850
NCBI Accession:	NP_001248348 , NP_004624
UniProt:	P27930
Pathways:	NF-kappaB Signaling

Application Details

Application Notes:	WB: 1:1000
Restrictions:	For Research Use only

Handling

Format:	Liquid
Buffer:	Purified polyclonal antibody supplied in PBS with 0.09 % (W/V) sodium azide.
Preservative:	Sodium azide
Precaution of Use:	This product contains Sodium azide: a POISONOUS AND HAZARDOUS SUBSTANCE which should be handled by trained staff only.
Storage:	4 °C,-20 °C
Storage Comment:	Maintain refrigerated at 2-8 °C for up to 6 months. For long term storage store at -20 °C in small aliquots to prevent freeze-thaw cycles.
Expiry Date:	6 months



Western Blotting

Image 1. IL1R2 Antibody (Center) (ABIN655001 and ABIN2844635) western blot analysis in WiDr cell line lysates (35 µg/lane). This demonstrates the IL1R2 antibody detected the IL1R2 protein (arrow).