



[Go to Product page](#)

Datasheet for ABIN655004
anti-CI150 antibody (N-Term)

3 Images

Overview

Quantity:	400 µL
Target:	CI150
Binding Specificity:	AA 11-40, N-Term
Reactivity:	Human
Host:	Rabbit
Clonality:	Polyclonal
Conjugate:	This CI150 antibody is un-conjugated
Application:	Western Blotting (WB), Flow Cytometry (FACS), Immunohistochemistry (Paraffin-embedded Sections) (IHC (p))

Product Details

Immunogen:	This CI150 antibody is generated from rabbits immunized with a KLH conjugated synthetic peptide between 11-40 amino acids from the N-terminal region of human CI150.
Clone:	RB28630
Isotype:	Ig Fraction
Purification:	This antibody is purified through a protein A column, followed by peptide affinity purification.

Target Details

Target:	CI150
Alternative Name:	CI150 (CI150 Products)

Target Details

Molecular Weight:	24583
Gene ID:	286343
NCBI Accession:	NP_981948
UniProt:	Q8IV03

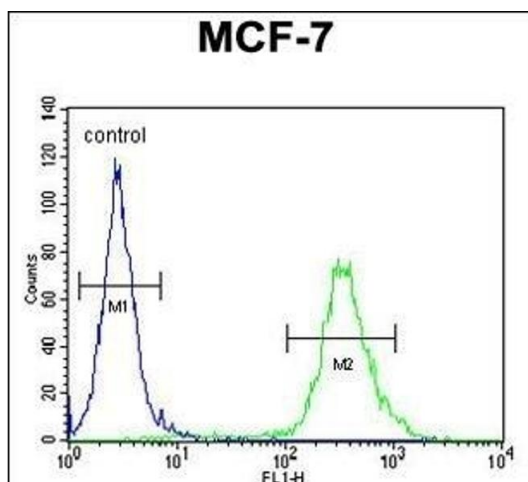
Application Details

Application Notes:	WB: 1:1000. IHC-P: 1:50~100. FC: 1:10~50
Restrictions:	For Research Use only

Handling

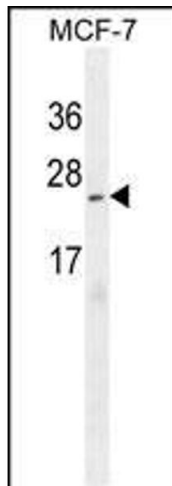
Format:	Liquid
Buffer:	Purified polyclonal antibody supplied in PBS with 0.09 % (W/V) sodium azide.
Preservative:	Sodium azide
Precaution of Use:	This product contains Sodium azide: a POISONOUS AND HAZARDOUS SUBSTANCE which should be handled by trained staff only.
Storage:	4 °C, -20 °C
Storage Comment:	Maintain refrigerated at 2-8 °C for up to 6 months. For long term storage store at -20 °C in small aliquots to prevent freeze-thaw cycles.
Expiry Date:	6 months

Images



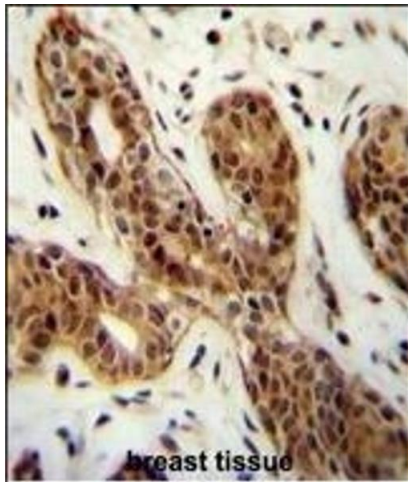
Flow Cytometry

Image 1. C Antibody (N-term) (ABIN655004 and ABIN2844639) flow cytometric analysis of MCF-7 cells (right histogram) compared to a negative control cell (left histogram). FITC-conjugated goat-anti-rabbit secondary antibodies were used for the analysis.



Western Blotting

Image 2. C Antibody (N-term) (ABIN655004 and ABIN2844639) western blot analysis in MCF-7 cell line lysates (35 µg/lane). This demonstrates the C antibody detected the C protein (arrow).



Immunohistochemistry (Paraffin-embedded Sections)

Image 3. C Antibody (N-term) (ABIN655004 and ABIN2844639) immunohistochemistry analysis in formalin fixed and paraffin embedded human breast tissue followed by peroxidase conjugation of the secondary antibody and DAB staining. This data demonstrates the use of the C Antibody (N-term) for immunohistochemistry. Clinical relevance has not been evaluated.