

Datasheet for ABIN655005  
**anti-WDR5B antibody (N-Term)**[Go to Product page](#)

## 2 Images

## Overview

Quantity:	400 µL
Target:	WDR5B
Binding Specificity:	AA 58-85, N-Term
Reactivity:	Human
Host:	Rabbit
Clonality:	Polyclonal
Conjugate:	This WDR5B antibody is un-conjugated
Application:	Western Blotting (WB), Flow Cytometry (FACS)

## Product Details

Immunogen:	This WDR5B antibody is generated from rabbits immunized with a KLH conjugated synthetic peptide between 58-85 amino acids from the N-terminal region of human WDR5B.
Clone:	RB28713
Isotype:	Ig Fraction
Purification:	This antibody is purified through a protein A column, followed by peptide affinity purification.

## Target Details

Target:	WDR5B
Alternative Name:	WDR5B ( <a href="#">WDR5B Products</a> )
Background:	This intronless gene encodes a protein containing several WD40 repeats. WD repeats are

## Target Details

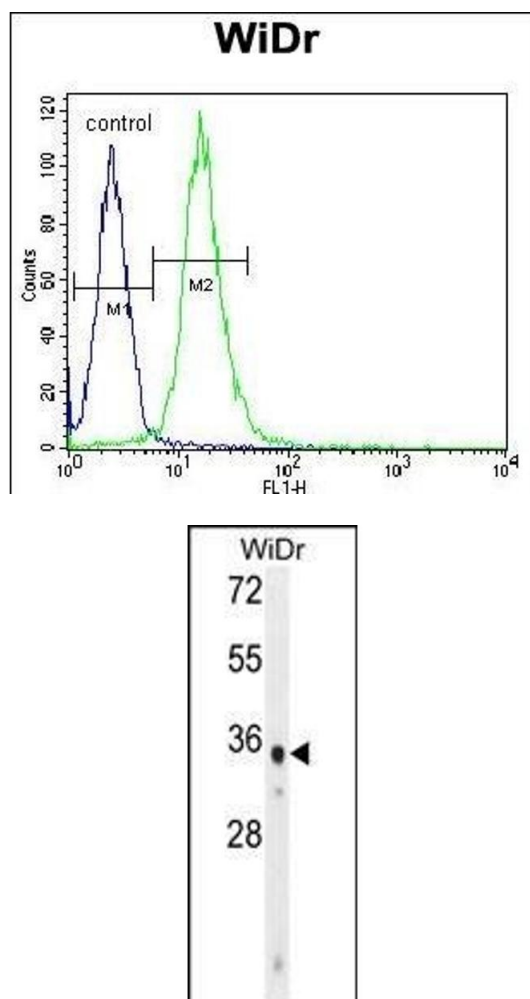
	approximately 30- to 40-amino acid domains containing several conserved residues, including a trp-aspartate at the C-terminal end. The encoded protein may mediate protein-protein interactions.
Molecular Weight:	36338
Gene ID:	54554
NCBI Accession:	<a href="#">NP_061942</a>
UniProt:	<a href="#">Q86VZ2</a>

## Application Details

Application Notes:	WB: 1:1000. FC: 1:10~50
Restrictions:	For Research Use only

## Handling

Format:	Liquid
Buffer:	Purified polyclonal antibody supplied in PBS with 0.09 % (W/V) sodium azide.
Preservative:	Sodium azide
Precaution of Use:	This product contains Sodium azide: a POISONOUS AND HAZARDOUS SUBSTANCE which should be handled by trained staff only.
Storage:	4 °C,-20 °C
Storage Comment:	Maintain refrigerated at 2-8 °C for up to 6 months. For long term storage store at -20 °C in small aliquots to prevent freeze-thaw cycles.
Expiry Date:	6 months



### Flow Cytometry

**Image 1.** WDR5B Antibody (N-term) (ABIN655005 and ABIN2844640) flow cytometric analysis of WiDr cells (right histogram) compared to a negative control cell (left histogram). FITC-conjugated goat-anti-rabbit secondary antibodies were used for the analysis.

### Western Blotting

**Image 2.** WDR5B Antibody (N-term) (ABIN655005 and ABIN2844640) western blot analysis in WiDr cell line lysates (35 µg/lane). This demonstrates the WDR5B antibody detected the WDR5B protein (arrow).