

Datasheet for ABIN655007
anti-ENGASE antibody (AA 326-354)[Go to Product page](#)

3 Images

Overview

Quantity:	400 µL
Target:	ENGASE
Binding Specificity:	AA 326-354
Reactivity:	Human
Host:	Rabbit
Clonality:	Polyclonal
Conjugate:	This ENGASE antibody is un-conjugated
Application:	Western Blotting (WB), Flow Cytometry (FACS), Immunohistochemistry (Paraffin-embedded Sections) (IHC (p))

Product Details

Immunogen:	This ENASE antibody is generated from rabbits immunized with a KLH conjugated synthetic peptide between 326-354 amino acids from the Central region of human ENASE.
Clone:	RB28722
Isotype:	Ig Fraction
Predicted Reactivity:	M
Purification:	This antibody is purified through a protein A column, followed by peptide affinity purification.

Target Details

Target:	ENGASE
---------	--------

Target Details

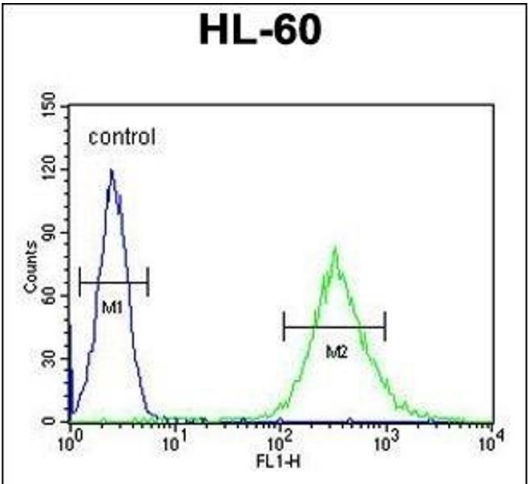
Alternative Name:	ENASE (ENGASE Products)
Background:	Endo-beta-N-acetylglucosaminidase (ENGase, EC 3.2.1.96) is involved in the processing of free oligosaccharides in the cytosol.
Molecular Weight:	83987
Gene ID:	64772
NCBI Accession:	NP_001036038
UniProt:	Q8NFI3

Application Details

Application Notes:	WB: 1:2000. IHC-P: 1:50~100. FC: 1:10~50
Restrictions:	For Research Use only

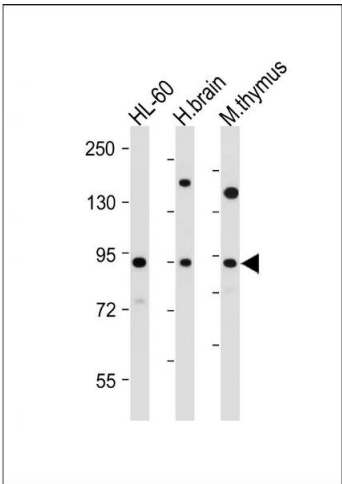
Handling

Format:	Liquid
Buffer:	Purified polyclonal antibody supplied in PBS with 0.09 % (W/V) sodium azide.
Preservative:	Sodium azide
Precaution of Use:	This product contains Sodium azide: a POISONOUS AND HAZARDOUS SUBSTANCE which should be handled by trained staff only.
Storage:	4 °C,-20 °C
Storage Comment:	Maintain refrigerated at 2-8 °C for up to 6 months. For long term storage store at -20 °C in small aliquots to prevent freeze-thaw cycles.
Expiry Date:	6 months



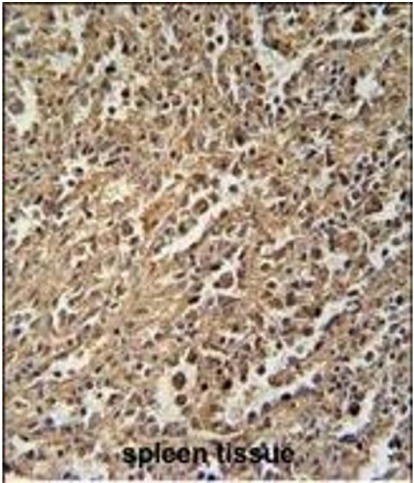
Flow Cytometry

Image 1. ENASE Antibody (Center) (ABIN655007 and ABIN2844642) flow cytometric analysis of HL-60 cells (right histogram) compared to a negative control cell (left histogram). FITC-conjugated goat-anti-rabbit secondary antibodies were used for the analysis.



Western Blotting

Image 2. All lanes : Anti-ENASE Antibody (Center) at 1:2000 dilution Lane 1: HL-60 whole cell lysate Lane 2: human brain tissue lysate Lane 3: mouse thymus tissue lysate Lysates/proteins at 20 µg per lane. Secondary Goat Anti-Rabbit IgG, (H+L), Peroxidase conjugated at 1/10000 dilution. Predicted band size : 84 kDa Blocking/Dilution buffer: 5 % NFDM/TBST.



Immunohistochemistry (Paraffin-embedded Sections)

Image 3. ENASE Antibody (Center) (ABIN655007 and ABIN2844642) immunohistochemistry analysis in formalin fixed and paraffin embedded human spleen tissue followed by peroxidase conjugation of the secondary antibody and DAB staining. This data demonstrates the use of the ENASE Antibody (Center) for immunohistochemistry. Clinical relevance has not been evaluated.