

Datasheet for ABIN655010
anti-IFITM5 antibody (AA 55-83)

5 Images

[Go to Product page](#)

Overview

| | |
|----------------------|---|
| Quantity: | 400 µL |
| Target: | IFITM5 |
| Binding Specificity: | AA 55-83 |
| Reactivity: | Human, Mouse |
| Host: | Rabbit |
| Clonality: | Polyclonal |
| Conjugate: | This IFITM5 antibody is un-conjugated |
| Application: | Western Blotting (WB), Flow Cytometry (FACS), Immunohistochemistry (Paraffin-embedded Sections) (IHC (p)) |

Product Details

| | |
|---------------|---|
| Immunogen: | This IFITM5 antibody is generated from rabbits immunized with a KLH conjugated synthetic peptide between 55-83 amino acids of human IFITM5. |
| Clone: | RB28800 |
| Isotype: | IgG |
| Purification: | This antibody is purified through a protein A column, followed by peptide affinity purification. |

Target Details

| | |
|-------------------|--|
| Target: | IFITM5 |
| Alternative Name: | IFITM5 (IFITM5 Products) |

Target Details

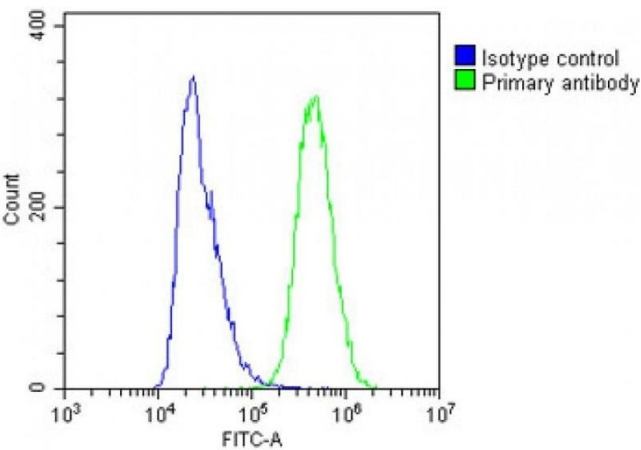
| | |
|-------------------|--|
| Background: | Plays a role in bone mineralization (By similarity). |
| Molecular Weight: | 14378 |
| Gene ID: | 387733 |
| NCBI Accession: | NP_001020466 |
| UniProt: | A6NNB3 |

Application Details

| | |
|--------------------|--|
| Application Notes: | WB: 1:2000. WB: 1:4000. WB: 1:2000. IHC-P-Leica: 1:500. FC: 1:25 |
| Restrictions: | For Research Use only |

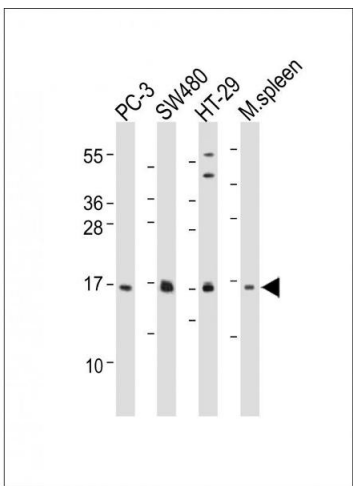
Handling

| | |
|--------------------|--|
| Format: | Liquid |
| Buffer: | Purified polyclonal antibody supplied in PBS with 0.09 % (W/V) sodium azide. |
| Preservative: | Sodium azide |
| Precaution of Use: | This product contains Sodium azide: a POISONOUS AND HAZARDOUS SUBSTANCE which should be handled by trained staff only. |
| Storage: | 4 °C,-20 °C |
| Storage Comment: | Maintain refrigerated at 2-8 °C for up to 6 months. For long term storage store at -20 °C in small aliquots to prevent freeze-thaw cycles. |
| Expiry Date: | 6 months |



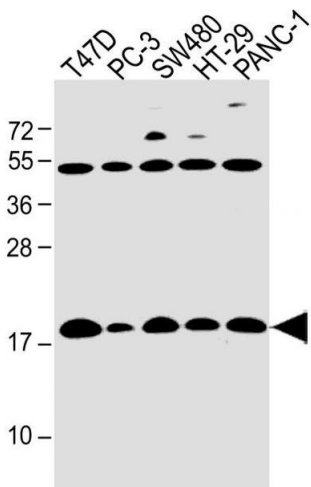
Flow Cytometry

Image 1. Overlay histogram showing A431 cells stained with C (green line). The cells were fixed with 2 % paraformaldehyde and then permeabilized with 90 % methanol for 10 min. The cells were then incubated in 2 % bovine serum albumin to block non-specific protein-protein interactions followed by the antibody (1:25 dilution) for 60 min at 37 °C. The secondary antibody used was Goat Anti-Rabbit IgG, DyLight® 488 Conjugated Highly Cross-Adsorbed at 1/200 dilution for 40 min at Room temperature. Isotype control antibody (blue line) was rabbit IgG1 (1 μ g/ 1×10^6 cells) used under the same conditions. Acquisition of >10,000 events was performed.



Western Blotting

Image 2. All lanes : Anti-IFITM5 Antibody (Center) at 1:2000 dilution Lane 1: PC-3 whole cell lysate Lane 2: S whole cell lysate Lane 3: HT-29 whole cell lysate Lane 4: Mouse spleen lysate Lysates/proteins at 20 μ g per lane. Secondary Goat Anti-Rabbit IgG, (H+L), Peroxidase conjugated at 1/10000 dilution. Predicted band size : 14 kDa Blocking/Dilution buffer: 5 % NFDM/TBST.



Western Blotting

Image 3. All lanes : Anti-IFITM5 Antibody (Center) at 1:4000 dilution Lane 1: T47D whole cell lysate Lane 2: PC-3 whole cell lysate Lane 3: S whole cell lysate Lane 4: HT-29 whole cell lysate Lane 5: NC-1 whole cell lysate Lysates/proteins at 20 μ g per lane. Secondary Goat Anti-Rabbit IgG, (H+L), Peroxidase conjugated at 1/10000 dilution. Predicted band size : 14 kDa Blocking/Dilution buffer: 5 % NFDM/TBST.

Please check the [product details page](#) for more images. Overall 5 images are available for ABIN655010.