

Datasheet for ABIN655024
anti-SULT1C3 antibody (C-Term)[Go to Product page](#)

1 Image

Overview

| | |
|----------------------|--|
| Quantity: | 400 µL |
| Target: | SULT1C3 |
| Binding Specificity: | AA 264-292, C-Term |
| Reactivity: | Human |
| Host: | Rabbit |
| Clonality: | Polyclonal |
| Conjugate: | This SULT1C3 antibody is un-conjugated |
| Application: | Western Blotting (WB) |

Product Details

| | |
|---------------|--|
| Immunogen: | This SULT1C3 antibody is generated from rabbits immunized with a KLH conjugated synthetic peptide between 264-292 amino acids from the C-terminal region of human SULT1C3. |
| Clone: | RB28884 |
| Isotype: | Ig Fraction |
| Purification: | This antibody is purified through a protein A column, followed by peptide affinity purification. |

Target Details

| | |
|-------------------|---|
| Target: | SULT1C3 |
| Alternative Name: | SULT1C3 (SULT1C3 Products) |
| Background: | Has low sulphotransferase activity towards various substrates with alcohol groups (in vitro). |

Target Details

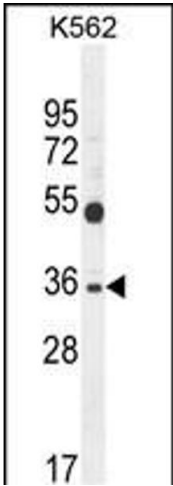
| | |
|-------------------|---|
| | May catalyze the sulfate conjugation of xenobiotic compounds and endogenous substrates. |
| Molecular Weight: | 35889 |
| Gene ID: | 442038 |
| NCBI Accession: | NP_001008743 |
| UniProt: | Q6IMI6 |

Application Details

| | |
|--------------------|-----------------------|
| Application Notes: | WB: 1:1000 |
| Restrictions: | For Research Use only |

Handling

| | |
|--------------------|--|
| Format: | Liquid |
| Buffer: | Purified polyclonal antibody supplied in PBS with 0.09 % (W/V) sodium azide. |
| Preservative: | Sodium azide |
| Precaution of Use: | This product contains Sodium azide: a POISONOUS AND HAZARDOUS SUBSTANCE which should be handled by trained staff only. |
| Storage: | 4 °C,-20 °C |
| Storage Comment: | Maintain refrigerated at 2-8 °C for up to 6 months. For long term storage store at -20 °C in small aliquots to prevent freeze-thaw cycles. |
| Expiry Date: | 6 months |



Western Blotting

Image 1. SULT1C3 Antibody (C-term) (ABIN655024 and ABIN2844656) western blot analysis in K562 cell line lysates (35 µg/lane). This demonstrates the SULT1C3 antibody detected the SULT1C3 protein (arrow).