

Datasheet for ABIN655030
anti-USF1 antibody (AA 174-201)



[Go to Product page](#)

4 Images

Overview

Quantity:	400 µL
Target:	USF1
Binding Specificity:	AA 174-201
Reactivity:	Human, Mouse
Host:	Rabbit
Clonality:	Polyclonal
Conjugate:	This USF1 antibody is un-conjugated
Application:	Western Blotting (WB), Immunofluorescence (IF), Flow Cytometry (FACS), Immunohistochemistry (Paraffin-embedded Sections) (IHC (p))

Product Details

Immunogen:	This USF1 antibody is generated from rabbits immunized with a KLH conjugated synthetic peptide between 174-201 amino acids from the Central region of human USF1.
Clone:	RB30049
Isotype:	Ig Fraction
Predicted Reactivity:	B
Purification:	This antibody is purified through a protein A column, followed by peptide affinity purification.

Target Details

Target:	USF1
---------	------

Target Details

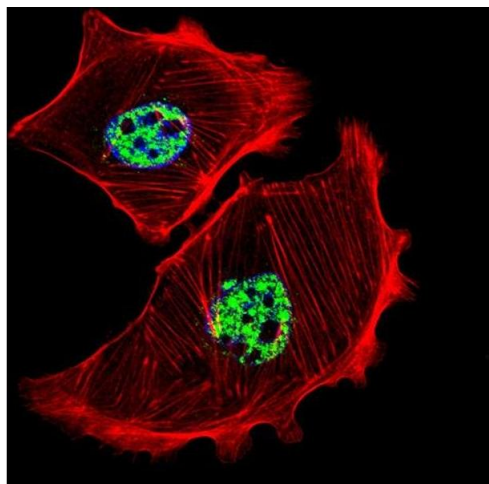
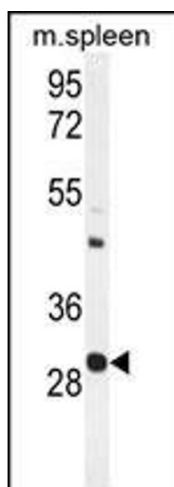
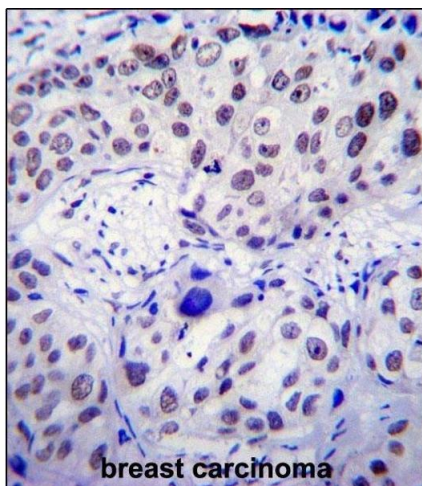
Alternative Name:	USF1 (USF1 Products)
Background:	This gene encodes a member of the basic helix-loop-helix leucine zipper family, and can function as a cellular transcription factor. The encoded protein can activate transcription through pyrimidine-rich initiator (Inr) elements and E-box motifs. This gene has been linked to familial combined hyperlipidemia (FCHL). Two transcript variants encoding distinct isoforms have been identified for this gene.
Molecular Weight:	33538
Gene ID:	7391
NCBI Accession:	NP_001263302 , NP_009053 , NP_996888
UniProt:	P22415
Pathways:	Carbohydrate Homeostasis

Application Details

Application Notes:	IF: 1:10~50. WB: 1:1000. IHC-P: 1:10~50. FC: 1:10~50
Restrictions:	For Research Use only

Handling

Format:	Liquid
Buffer:	Purified polyclonal antibody supplied in PBS with 0.09 % (W/V) sodium azide.
Preservative:	Sodium azide
Precaution of Use:	This product contains Sodium azide: a POISONOUS AND HAZARDOUS SUBSTANCE which should be handled by trained staff only.
Storage:	4 °C,-20 °C
Storage Comment:	Maintain refrigerated at 2-8 °C for up to 6 months. For long term storage store at -20 °C in small aliquots to prevent freeze-thaw cycles.
Expiry Date:	6 months



Immunohistochemistry (Paraffin-embedded Sections)

Image 1. USF1 Antibody (Center) (ABIN655030 and ABIN2844661) immunohistochemistry analysis in formalin fixed and paraffin embedded human breast carcinoma followed by peroxidase conjugation of the secondary antibody and DAB staining. This data demonstrates the use of USF1 Antibody (Center) for immunohistochemistry. Clinical relevance has not been evaluated.

Western Blotting

Image 2. USF1 Antibody (Center) (ABIN655030 and ABIN2844661) western blot analysis in mouse spleen tissue lysates (35 µg/lane). This demonstrates the USF1 antibody detected the USF1 protein (arrow).

Immunofluorescence

Image 3. Fluorescent confocal image of SK-BR-3 cell stained with USF1 Antibody (Center) (ABIN655030 and ABIN2844661). SK-BR-3 cells were fixed with 4 % PFA (20 min), permeabilized with Triton X-100 (0.1 %, 10 min), then incubated with USF1 primary antibody (1:25, 1 h at 37 °C). For secondary antibody, Alexa Fluor® 488 conjugated donkey anti-rabbit antibody (green) was used (1:400, 50 min at 37 °C). Cytoplasmic actin was counterstained with Alexa Fluor® 555 (red) conjugated Phalloidin (7 units/mL, 1 h at 37 °C). Nuclei were counterstained with DAPI (blue) (10 µg/mL, 10 min). USF1 immunoreactivity is localized to nucleus significantly.

Please check the [product details page](#) for more images. Overall 4 images are available for ABIN655030.