

Datasheet for ABIN655035
anti-FEZF1 antibody (N-Term)[Go to Product page](#)

1 Image

Overview

Quantity:	400 µL
Target:	FEZF1
Binding Specificity:	AA 67-96, N-Term
Reactivity:	Human, Mouse
Host:	Rabbit
Clonality:	Polyclonal
Conjugate:	This FEZF1 antibody is un-conjugated
Application:	Western Blotting (WB)

Product Details

Immunogen:	This FEZF1 antibody is generated from rabbits immunized with a KLH conjugated synthetic peptide between 67-96 amino acids from the N-terminal region of human FEZF1.
Clone:	RB30120
Isotype:	Ig Fraction
Purification:	This antibody is purified through a protein A column, followed by peptide affinity purification.

Target Details

Target:	FEZF1
Alternative Name:	FEZF1 (FEZF1 Products)
Background:	Transcription repressor. Involved in the axonal projection and proper termination of olfactory

Target Details

sensory neurons (OSN). Plays a role in rostro-caudal patterning of the diencephalon and in prethalamus formation. Expression is required in OSN to cell-autonomously regulate OSN axon projections. Regulates non-cell-autonomously the layer formation of the olfactory bulb development and the interneurons. May be required for correct rostral migration of the interneuron progenitors (By similarity).

Molecular Weight: 52038

Gene ID: 389549

NCBI Accession: [NP_001019784](#), [NP_001153736](#)

UniProt: [A0PJY2](#)

Application Details

Application Notes: WB: 1:1000

Restrictions: For Research Use only

Handling

Format: Liquid

Buffer: Purified polyclonal antibody supplied in PBS with 0.09 % (W/V) sodium azide.

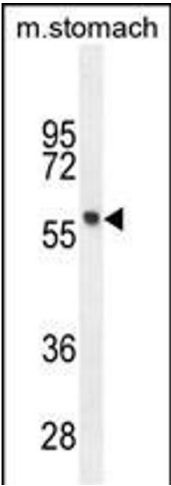
Preservative: Sodium azide

Precaution of Use: This product contains Sodium azide: a POISONOUS AND HAZARDOUS SUBSTANCE which should be handled by trained staff only.

Storage: 4 °C, -20 °C

Storage Comment: Maintain refrigerated at 2-8 °C for up to 6 months. For long term storage store at -20 °C in small aliquots to prevent freeze-thaw cycles.

Expiry Date: 6 months



Western Blotting

Image 1. FEZF1 Antibody (N-term) (ABIN655035 and ABIN2844667) western blot analysis in mouse stomach tissue lysates (35 µg/lane). This demonstrates the FEZF1 antibody detected the FEZF1 protein (arrow).