

Datasheet for ABIN655036  
**anti-CLIP3 antibody (C-Term)**[Go to Product page](#)

## 2 Images

## Overview

|                      |  |
|----------------------|--|
| Quantity:            | 400 µL                                       |
| Target:              | CLIP3  |
| Binding Specificity: | AA 368-396, C-Term                           |
| Reactivity:          | Human  |
| Host:                | Rabbit                                       |
| Clonality:           | Polyclonal                                   |
| Conjugate:           | This CLIP3 antibody is un-conjugated         |
| Application:         | Western Blotting (WB), Flow Cytometry (FACS) |

## Product Details

|                       |  |
|-----------------------|--|
| Immunogen:            | This CLIP3 antibody is generated from rabbits immunized with a KLH conjugated synthetic peptide between 368-396 amino acids from the C-terminal region of human CLIP3. |
| Clone:                | RB30141  |
| Isotype:              | Ig Fraction  |
| Predicted Reactivity: | M  |
| Purification:         | This antibody is purified through a protein A column, followed by peptide affinity purification.   |

## Target Details

|                   |  |
|-------------------|--|
| Target:           | CLIP3                                    |
| Alternative Name: | CLIP3 ( <a href="#">CLIP3 Products</a> ) |

## Target Details

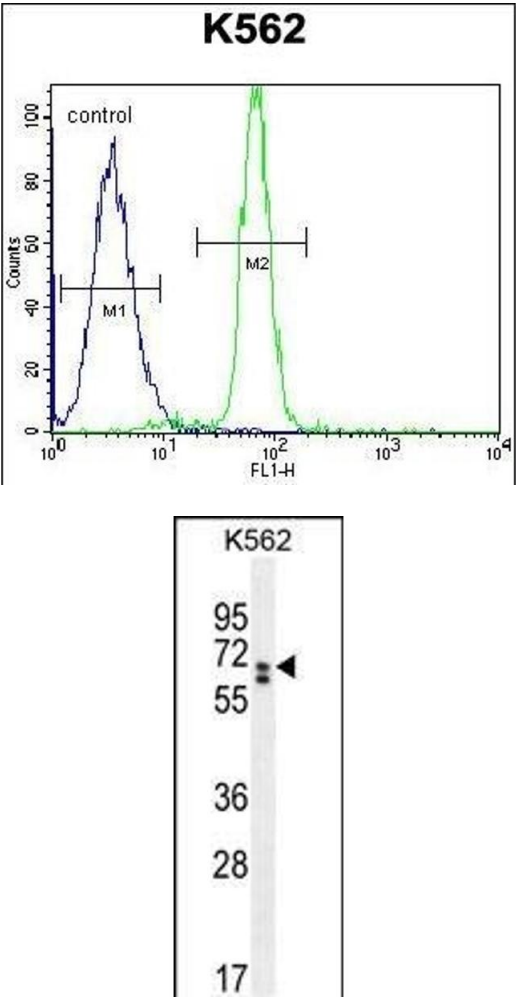
|                   |   |
|-------------------|---|
| Background:       | Functions as a cytoplasmic linker protein. Involved in TGN-endosome dynamics. |
| Molecular Weight: | 59560   |
| Gene ID:          | 25999   |
| NCBI Accession:   | <a href="#">NP_001186499</a> , <a href="#">NP_056341</a>                      |
| UniProt:          | <a href="#">Q96DZ5</a>  |

## Application Details

|                    |                         |
|--------------------|-------------------------|
| Application Notes: | WB: 1:1000. FC: 1:10~50 |
| Restrictions:      | For Research Use only   |

## Handling

|                    |  |
|--------------------|--|
| Format:            | Liquid   |
| Buffer:            | Purified polyclonal antibody supplied in PBS with 0.09 % (W/V) sodium azide.   |
| Preservative:      | Sodium azide   |
| Precaution of Use: | This product contains Sodium azide: a POISONOUS AND HAZARDOUS SUBSTANCE which should be handled by trained staff only.                     |
| Storage:           | 4 °C, -20 °C   |
| Storage Comment:   | Maintain refrigerated at 2-8 °C for up to 6 months. For long term storage store at -20 °C in small aliquots to prevent freeze-thaw cycles. |
| Expiry Date:       | 6 months   |



Flow Cytometry

**Image 1.** CLIP3 Antibody (C-term) (ABIN655036 and ABIN2844668) flow cytometric analysis of K562 cells (right histogram) compared to a negative control cell (left histogram).FITC-conjugated goat-anti-rabbit secondary antibodies were used for the analysis.

Western Blotting

**Image 2.** CLIP3 Antibody (C-term) (ABIN655036 and ABIN2844668) western blot analysis in K562 cell line lysates (35 µg/lane).This demonstrates the CLIP3 antibody detected the CLIP3 protein (arrow).