

Datasheet for ABIN655037
anti-PTPRJ antibody (His6)

3 Images

[Go to Product page](#)

Overview

Quantity:	400 µL
Target:	PTPRJ
Binding Specificity:	His6
Reactivity:	Human
Host:	Rabbit
Clonality:	Polyclonal
Conjugate:	This PTPRJ antibody is un-conjugated
Application:	Western Blotting (WB), Immunofluorescence (IF), Immunohistochemistry (Paraffin-embedded Sections) (IHC (p))

Product Details

Immunogen:	Poly-HIS protein were used to produced this antibody.
Clone:	RB07285
Isotype:	Ig Fraction
Purification:	This antibody is purified through a protein A column, followed by dialysis against PBS.

Target Details

Target:	PTPRJ
Alternative Name:	DEP-1 (PTPRJ Products)
Background:	May contribute to the mechanism of contact inhibition of cell growth.

Target Details

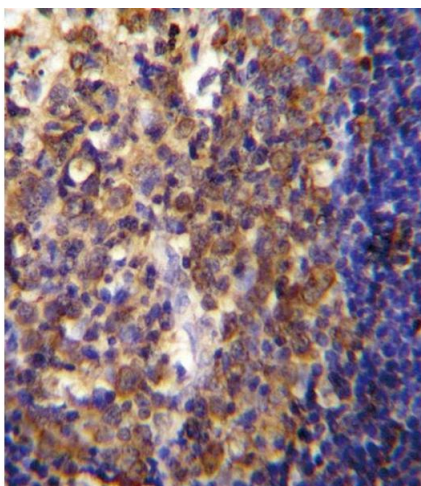
Molecular Weight:	145941
Gene ID:	5795
NCBI Accession:	NP_001091973 , NP_002834
UniProt:	Q12913
Pathways:	EGFR Signaling Pathway , Platelet-derived growth Factor Receptor Signaling

Application Details

Application Notes:	IF: 1:10~50. WB: 1:1000. IHC-P: 1:10~50
Restrictions:	For Research Use only

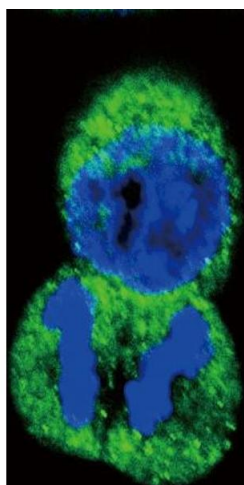
Handling

Format:	Liquid
Buffer:	Purified monoclonal antibody supplied in PBS with 0.09 % (W/V) sodium azide.
Preservative:	Sodium azide
Precaution of Use:	This product contains Sodium azide: a POISONOUS AND HAZARDOUS SUBSTANCE which should be handled by trained staff only.
Storage:	4 °C,-20 °C
Storage Comment:	Maintain refrigerated at 2-8 °C for up to 6 months. For long term storage store at -20 °C in small aliquots to prevent freeze-thaw cycles.
Expiry Date:	6 months



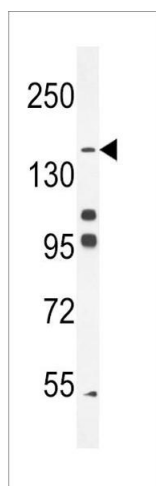
Immunohistochemistry (Paraffin-embedded Sections)

Image 1. His6-DEP-1 Antibody (ABIN655037 and ABIN2844669) immunohistochemistry analysis in formalin fixed and paraffin embedded human tonsil tissue followed by peroxidase conjugation of the secondary antibody and DAB staining. This data demonstrates the use of His6-DEP-1 Antibody for immunohistochemistry. Clinical relevance has not been evaluated.



Immunofluorescence

Image 2. Confocal immunofluorescent analysis of His6-DEP-1 Antibody (ABIN655037 and ABIN2844669) with HeLa cell followed by Alexa Fluor[®]488-conjugated goat anti-rabbit IgG (green). DAPI was used to stain the cell nuclear (blue).



Western Blotting

Image 3. His6-DEP-1 (ABIN655037 and ABIN2844669) western blot analysis in K562 cell line lysates (35 μ g/lane). This demonstrates the DEP-1 antibody detected the DEP-1 protein (arrow).