

Datasheet for ABIN655046
anti-AASS antibody (C-Term)[Go to Product page](#)

2 Images

Overview

Quantity:	400 µL
Target:	AASS
Binding Specificity:	AA 805-834, C-Term
Reactivity:	Human
Host:	Rabbit
Clonality:	Polyclonal
Conjugate:	This AASS antibody is un-conjugated
Application:	Western Blotting (WB), Flow Cytometry (FACS)

Product Details

Immunogen:	This AASS antibody is generated from rabbits immunized with a KLH conjugated synthetic peptide between 805-834 amino acids from the C-terminal region of human AASS.
Clone:	RB14895
Isotype:	Ig Fraction
Purification:	This antibody is prepared by Saturated Ammonium Sulfate (SAS) precipitation followed by dialysis against PBS.

Target Details

Target:	AASS
Alternative Name:	AASS (AASS Products)

Target Details

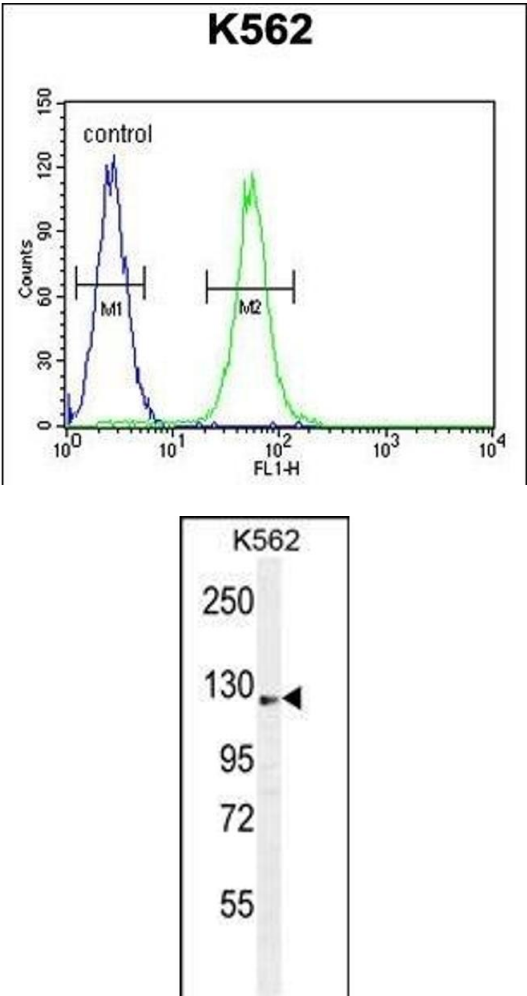
Background:	This gene encodes a bifunctional enzyme that catalyzes the first two steps in the mammalian lysine degradation pathway. The N-terminal and the C-terminal portions of this enzyme contain lysine-ketoglutarate reductase and saccharopine dehydrogenase activity, respectively, resulting in the conversion of lysine to alpha-aminoadipic semialdehyde. Mutations in this gene are associated with familial hyperlysinemia.
Molecular Weight:	102132
Gene ID:	10157
NCBI Accession:	NP_005754
UniProt:	Q9UDR5
Pathways:	SARS-CoV-2 Protein Interactome

Application Details

Application Notes:	WB: 1:1000. FC: 1:10~50
Restrictions:	For Research Use only

Handling

Format:	Liquid
Buffer:	Purified polyclonal antibody supplied in PBS with 0.09 % (W/V) sodium azide.
Preservative:	Sodium azide
Precaution of Use:	This product contains Sodium azide: a POISONOUS AND HAZARDOUS SUBSTANCE which should be handled by trained staff only.
Storage:	4 °C, -20 °C
Storage Comment:	Maintain refrigerated at 2-8 °C for up to 6 months. For long term storage store at -20 °C in small aliquots to prevent freeze-thaw cycles.
Expiry Date:	6 months



Flow Cytometry

Image 1. SS Antibody (C-term) (ABIN655046 and ABIN2844675) flow cytometric analysis of K562 cells (right histogram) compared to a negative control cell (left histogram).FITC-conjugated goat-anti-rabbit secondary antibodies were used for the analysis.

Western Blotting

Image 2. SS Antibody (C-term) (ABIN655046 and ABIN2844675) western blot analysis in K562 cell line lysates (35 µg/lane).This demonstrates the SS antibody detected the SS protein (arrow).