

Datasheet for ABIN655049  
**anti-KARS antibody (N-Term)**

## 3 Images

[Go to Product page](#)

## Overview

Quantity:	400 µL
Target:	KARS
Binding Specificity:	AA 70-98, N-Term
Reactivity:	Human
Host:	Rabbit
Clonality:	Polyclonal
Conjugate:	This KARS antibody is un-conjugated
Application:	Western Blotting (WB), Flow Cytometry (FACS)

## Product Details

Immunogen:	This KARS antibody is generated from rabbits immunized with a KLH conjugated synthetic peptide between 70-98 amino acids from the N-terminal region of human KARS.
Clone:	RB14918
Isotype:	Ig Fraction
Purification:	This antibody is prepared by Saturated Ammonium Sulfate (SAS) precipitation followed by dialysis against PBS.

## Target Details

Target:	KARS
Alternative Name:	KARS ( <a href="#">KARS Products</a> )

## Target Details

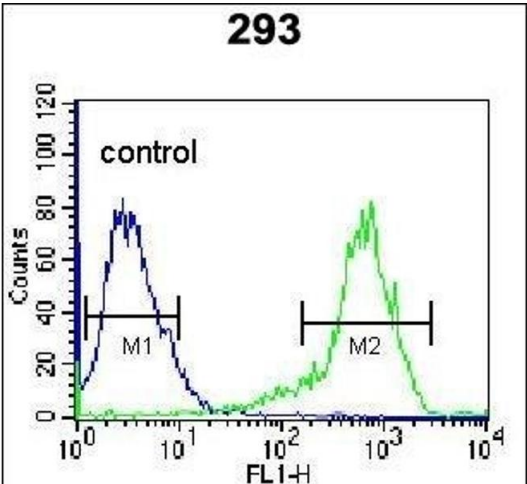
Background:	Aminoacyl-tRNA synthetases are a class of enzymes that charge tRNAs with their cognate amino acids. Lysyl-tRNA synthetase is a homodimer localized to the cytoplasm which belongs to the class II family of tRNA synthetases. It has been shown to be a target of autoantibodies in the human autoimmune diseases, polymyositis or dermatomyositis. Alternatively spliced transcript variants encoding different isoforms have been found for this gene.
Molecular Weight:	68048
Gene ID:	3735
NCBI Accession:	<a href="#">NP_001123561</a> , <a href="#">NP_005539</a>
UniProt:	<a href="#">Q15046</a>

## Application Details

Application Notes:	WB: 1:1000. WB: 1:1000. FC: 1:10~50
Restrictions:	For Research Use only

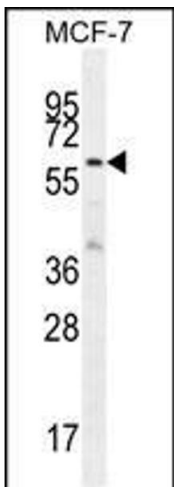
## Handling

Format:	Liquid
Buffer:	Purified polyclonal antibody supplied in PBS with 0.09 % (W/V) sodium azide.
Preservative:	Sodium azide
Precaution of Use:	This product contains Sodium azide: a POISONOUS AND HAZARDOUS SUBSTANCE which should be handled by trained staff only.
Storage:	4 °C,-20 °C
Storage Comment:	Maintain refrigerated at 2-8 °C for up to 6 months. For long term storage store at -20 °C in small aliquots to prevent freeze-thaw cycles.
Expiry Date:	6 months



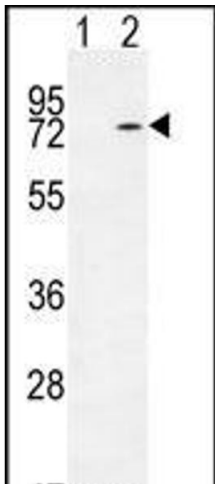
### Flow Cytometry

**Image 1.** KARS Antibody (N-term) (ABIN655049 and ABIN2844677) flow cytometric analysis of 293 cells (right histogram) compared to a negative control cell (left histogram). FITC-conjugated goat-anti-rabbit secondary antibodies were used for the analysis.



### Western Blotting

**Image 2.** KARS Antibody (N-term) (ABIN655049 and ABIN2844677) western blot analysis in MCF-7 cell line lysates (35  $\mu$ g/lane). This demonstrates the KARS antibody detected the KARS protein (arrow).



### Western Blotting

**Image 3.** Western blot analysis of KARS (arrow) using rabbit polyclonal KARS Antibody (N-term) (ABIN655049 and ABIN2844677). 293 cell lysates (2  $\mu$ g/lane) either nontransfected (Lane 1) or transiently transfected (Lane 2) with the KARS gene.