

Datasheet for ABIN655050
anti-LARS2 antibody (AA 418-446)[Go to Product page](#)

2 Images

Overview

Quantity:	400 µL
Target:	LARS2
Binding Specificity:	AA 418-446
Reactivity:	Human
Host:	Rabbit
Clonality:	Polyclonal
Conjugate:	This LARS2 antibody is un-conjugated
Application:	Western Blotting (WB), Flow Cytometry (FACS)

Product Details

Immunogen:	This LARS2 antibody is generated from rabbits immunized with a KLH conjugated synthetic peptide between 418-446 amino acids from the Central region of human LARS2.
Clone:	RB14921
Isotype:	Ig Fraction
Purification:	This antibody is prepared by Saturated Ammonium Sulfate (SAS) precipitation followed by dialysis against PBS.

Target Details

Target:	LARS2
Alternative Name:	LARS2 (LARS2 Products)

Target Details

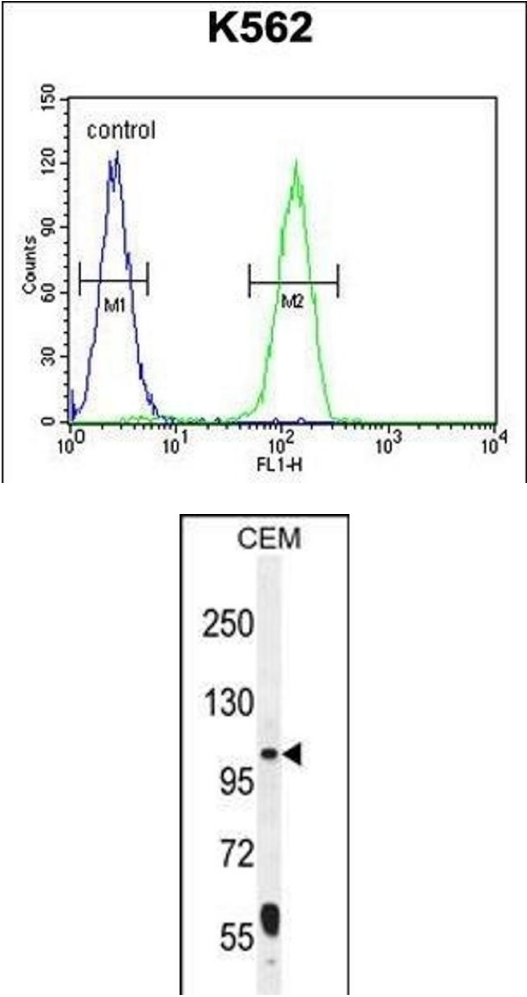
Background:	This gene encodes a class 1 aminoacyl-tRNA synthetase, mitochondrial leucyl-tRNA synthetase. Each of the twenty aminoacyl-tRNA synthetases catalyzes the aminoacylation of a specific tRNA or tRNA isoaccepting family with the cognate amino acid.
Molecular Weight:	101976
Gene ID:	23395
NCBI Accession:	NP_056155
UniProt:	Q15031

Application Details

Application Notes:	WB: 1:1000. FC: 1:10~50
Restrictions:	For Research Use only

Handling

Format:	Liquid
Buffer:	Purified polyclonal antibody supplied in PBS with 0.09 % (W/V) sodium azide.
Preservative:	Sodium azide
Precaution of Use:	This product contains Sodium azide: a POISONOUS AND HAZARDOUS SUBSTANCE which should be handled by trained staff only.
Storage:	4 °C, -20 °C
Storage Comment:	Maintain refrigerated at 2-8 °C for up to 6 months. For long term storage store at -20 °C in small aliquots to prevent freeze-thaw cycles.
Expiry Date:	6 months



Flow Cytometry

Image 1. LARS2 Antibody (Center) (ABIN655050 and ABIN2844678) flow cytometric analysis of K562 cells (right histogram) compared to a negative control cell (left histogram).FITC-conjugated goat-anti-rabbit secondary antibodies were used for the analysis.

Western Blotting

Image 2. LARS2 Antibody (Center) (ABIN655050 and ABIN2844678) western blot analysis in CEM cell line lysates (35 µg/lane).This demonstrates the LARS2 antibody detected the LARS2 protein (arrow).