



[Go to Product page](#)

Datasheet for ABIN655058
anti-ELMO2 antibody (AA 323-350)

3 Images

Overview

Quantity:	400 µL
Target:	ELMO2
Binding Specificity:	AA 323-350
Reactivity:	Human
Host:	Rabbit
Clonality:	Polyclonal
Conjugate:	This ELMO2 antibody is un-conjugated
Application:	Western Blotting (WB), Flow Cytometry (FACS), Immunohistochemistry (Paraffin-embedded Sections) (IHC (p))

Product Details

Immunogen:	This ELMO2 antibody is generated from rabbits immunized with a KLH conjugated synthetic peptide between 323-350 amino acids from the Central region of human ELMO2.
Clone:	RB17959
Isotype:	Ig Fraction
Predicted Reactivity:	M
Purification:	This antibody is purified through a protein A column, followed by peptide affinity purification.

Target Details

Target:	ELMO2
---------	-------

Target Details

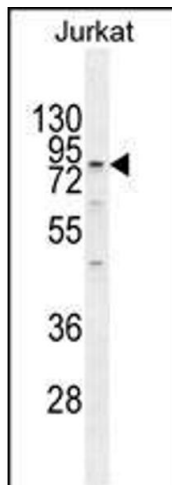
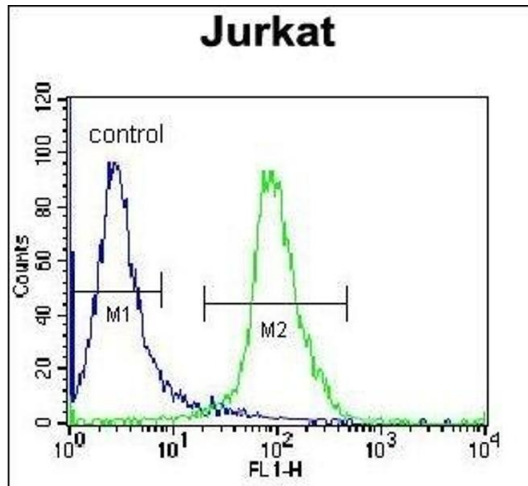
Alternative Name:	ELM02 (ELM02 Products)
Background:	The protein encoded by this gene interacts with the dedicator of cyto-kinesis 1 protein. Similarity to a <i>C. elegans</i> protein suggests that this protein may function in phagocytosis of apoptotic cells and in cell migration. Alternative splicing results in multiple transcript variants encoding the same protein.
Molecular Weight:	82615
Gene ID:	63916
NCBI Accession:	NP_573403 , NP_877496
UniProt:	Q96JJ3

Application Details

Application Notes:	WB: 1:1000. IHC-P: 1:50~100. FC: 1:10~50
Restrictions:	For Research Use only

Handling

Format:	Liquid
Buffer:	Purified polyclonal antibody supplied in PBS with 0.09 % (W/V) sodium azide.
Preservative:	Sodium azide
Precaution of Use:	This product contains Sodium azide: a POISONOUS AND HAZARDOUS SUBSTANCE which should be handled by trained staff only.
Storage:	4 °C,-20 °C
Storage Comment:	Maintain refrigerated at 2-8 °C for up to 6 months. For long term storage store at -20 °C in small aliquots to prevent freeze-thaw cycles.
Expiry Date:	6 months



Flow Cytometry

Image 1. ELMO2 Antibody (Center) (ABIN655058 and ABIN2844687) flow cytometric analysis of Jurkat cells (right histogram) compared to a negative control cell (left histogram). FITC-conjugated donkey-anti-rabbit secondary antibodies were used for the analysis.

Western Blotting

Image 2. ELMO2 Antibody (Center) (ABIN655058 and ABIN2844687) western blot analysis in Jurkat cell line lysates (35 µg/lane). This demonstrates the ELMO2 antibody detected the ELMO2 protein (arrow).

Immunohistochemistry (Paraffin-embedded Sections)

Image 3. ELMO2 Antibody (Center) (ABIN655058 and ABIN2844687) immunohistochemistry analysis in formalin fixed and paraffin embedded human skeletal muscle followed by peroxidase conjugation of the secondary antibody and DAB staining. This data demonstrates the use of ELMO2 Antibody (Center) for immunohistochemistry. Clinical relevance has not been evaluated.