



[Go to Product page](#)

Datasheet for ABIN655061  
**anti-HIP1R antibody (N-Term)**

3 Images

### Overview

Quantity:	400 µL
Target:	HIP1R
Binding Specificity:	AA 98-126, N-Term
Reactivity:	Human
Host:	Rabbit
Clonality:	Polyclonal
Conjugate:	This HIP1R antibody is un-conjugated
Application:	Western Blotting (WB), Flow Cytometry (FACS), Immunohistochemistry (Paraffin-embedded Sections) (IHC (p))

### Product Details

Immunogen:	This HIP1R antibody is generated from rabbits immunized with a KLH conjugated synthetic peptide between 98-126 amino acids from the N-terminal region of human HIP1R.
Clone:	RB18066
Isotype:	Ig Fraction
Purification:	This antibody is purified through a protein A column, followed by peptide affinity purification.

### Target Details

Target:	HIP1R
Alternative Name:	HIP1R ( <a href="#">HIP1R Products</a> )

## Target Details

---

Background:	This protein is a "fusion" protein encoding four enzymatic activities of the pyrimidine pathway (GATase, CPSase, ATCase and DHOase).
Molecular Weight:	119388
Gene ID:	9026
NCBI Accession:	<a href="#">NP_003950</a>
UniProt:	<a href="#">O75146</a>

## Application Details

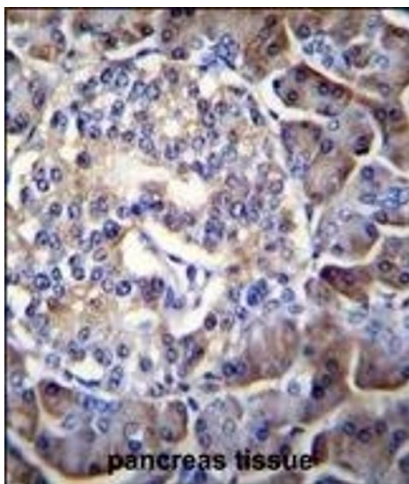
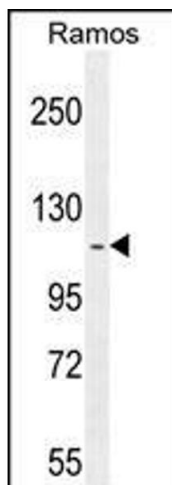
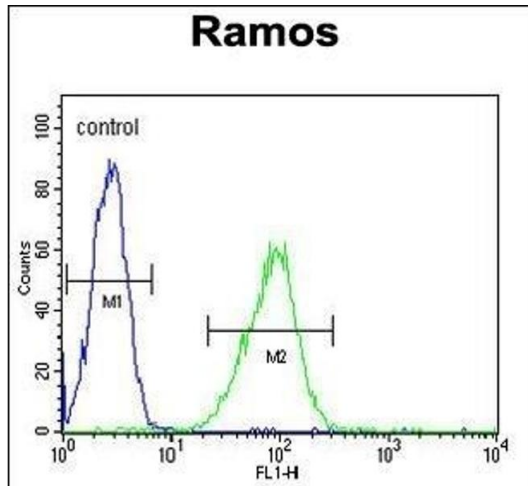
---

Application Notes:	WB: 1:1000. IHC-P: 1:10~50. FC: 1:10~50
Restrictions:	For Research Use only

## Handling

---

Format:	Liquid
Buffer:	Purified polyclonal antibody supplied in PBS with 0.09 % (W/V) sodium azide.
Preservative:	Sodium azide
Precaution of Use:	This product contains Sodium azide: a POISONOUS AND HAZARDOUS SUBSTANCE which should be handled by trained staff only.
Storage:	4 °C,-20 °C
Storage Comment:	Maintain refrigerated at 2-8 °C for up to 6 months. For long term storage store at -20 °C in small aliquots to prevent freeze-thaw cycles.
Expiry Date:	6 months



### Flow Cytometry

**Image 1.** HIP1R Antibody (N-term) (ABIN655061 and ABIN2844690) flow cytometric analysis of Ramos cells (right histogram) compared to a negative control cell (left histogram). FITC-conjugated goat-anti-rabbit secondary antibodies were used for the analysis.

### Western Blotting

**Image 2.** HIP1R Antibody (N-term) (ABIN655061 and ABIN2844690) western blot analysis in Ramos cell line lysates (35 µg/lane). This demonstrates the HIP1R antibody detected the HIP1R protein (arrow).

### Immunohistochemistry (Paraffin-embedded Sections)

**Image 3.** HIP1R Antibody (N-term) (ABIN655061 and ABIN2844690) immunohistochemistry analysis in formalin fixed and paraffin embedded human pancreas tissue followed by peroxidase conjugation of the secondary antibody and DAB staining. This data demonstrates the use of HIP1R Antibody (N-term) for immunohistochemistry. Clinical relevance has not been evaluated.