

Datasheet for ABIN655069
anti-GGCX antibody (AA 548-578)[Go to Product page](#)

2 Images

Overview

Quantity:	400 µL
Target:	GGCX
Binding Specificity:	AA 548-578
Reactivity:	Human
Host:	Rabbit
Clonality:	Polyclonal
Conjugate:	This GGCX antibody is un-conjugated
Application:	Western Blotting (WB), Immunohistochemistry (Paraffin-embedded Sections) (IHC (p))

Product Details

Immunogen:	This GGCX antibody is generated from rabbits immunized with a KLH conjugated synthetic peptide between 548-578 amino acids from the Central region of human GGCX.
Clone:	RB19281
Isotype:	Ig Fraction
Predicted Reactivity:	Rat
Purification:	This antibody is purified through a protein A column, followed by peptide affinity purification.

Target Details

Target:	GGCX
Alternative Name:	GGCX (GGCX Products)

Target Details

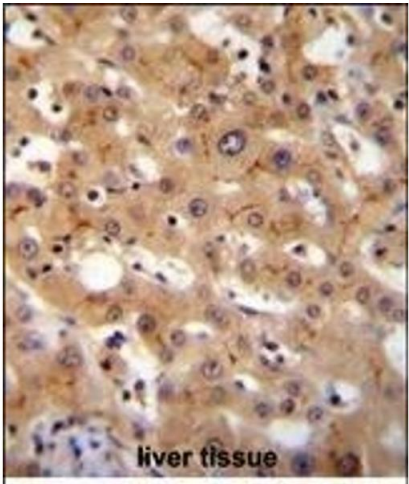
Background:	This gene encodes an enzyme which catalyzes the posttranslational modification of vitamin K-dependent protein. Many of these vitamin K-dependent proteins are involved in coagulation so the function of the encoded enzyme is essential for hemostasis. Mutations in this gene are associated with vitamin K-dependent coagulation defect and PXE-like disorder with multiple coagulation factor deficiency. Multiple transcript variants encoding different isoforms have been found for this gene.
Molecular Weight:	87561
Gene ID:	2677
NCBI Accession:	NP_000812 , NP_001135741
UniProt:	P38435
Pathways:	SARS-CoV-2 Protein Interactome

Application Details

Application Notes:	WB: 1:1000. IHC-P: 1:50~100
Restrictions:	For Research Use only

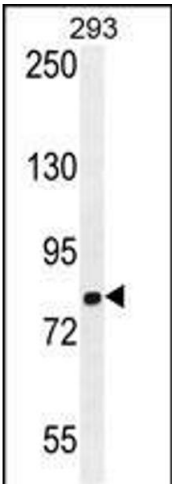
Handling

Format:	Liquid
Buffer:	Purified polyclonal antibody supplied in PBS with 0.09 % (W/V) sodium azide.
Preservative:	Sodium azide
Precaution of Use:	This product contains Sodium azide: a POISONOUS AND HAZARDOUS SUBSTANCE which should be handled by trained staff only.
Storage:	4 °C,-20 °C
Storage Comment:	Maintain refrigerated at 2-8 °C for up to 6 months. For long term storage store at -20 °C in small aliquots to prevent freeze-thaw cycles.
Expiry Date:	6 months



Immunohistochemistry (Paraffin-embedded Sections)

Image 1. GGCX Antibody (Center) (ABIN655069 and ABIN2844699) immunohistochemistry analysis in formalin fixed and paraffin embedded human liver tissue followed by peroxidase conjugation of the secondary antibody and DAB staining. This data demonstrates the use of GGCX Antibody (Center) for immunohistochemistry. Clinical relevance has not been evaluated.



Western Blotting

Image 2. GGCX Antibody (Center) (ABIN655069 and ABIN2844699) western blot analysis in 293 cell line lysates (35 µg/lane). This demonstrates the GGCX antibody detected the GGCX protein (arrow).