

Datasheet for ABIN655074
anti-PIP antibody (C-Term)

3 Images

[Go to Product page](#)

Overview

| | |
|----------------------|---|
| Quantity: | 400 µL |
| Target: | PIP |
| Binding Specificity: | AA 77-106, C-Term |
| Reactivity: | Human |
| Host: | Rabbit |
| Clonality: | Polyclonal |
| Conjugate: | This PIP antibody is un-conjugated |
| Application: | Western Blotting (WB), Immunofluorescence (IF), Immunohistochemistry (Paraffin-embedded Sections) (IHC (p)) |

Product Details

| | |
|---------------|---|
| Immunogen: | This GCDFP-15 antibody is generated from rabbits immunized with a KLH conjugated synthetic peptide between 77-106 amino acids from the C-terminal region of human GCDFP-15. |
| Clone: | RB19523 |
| Isotype: | Ig Fraction |
| Purification: | This antibody is purified through a protein A column, followed by peptide affinity purification. |

Target Details

| | |
|-------------------|---|
| Target: | PIP |
| Alternative Name: | GCDFP-15 (PIP Products) |

Target Details

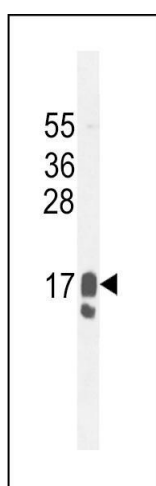
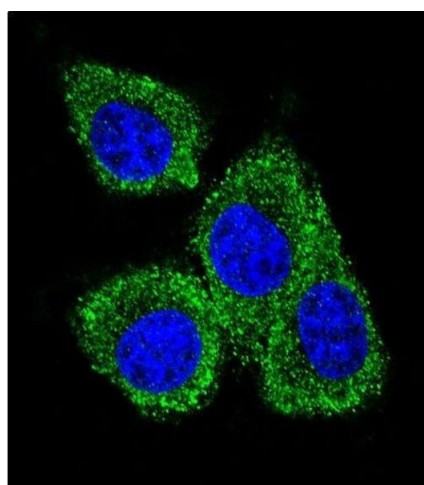
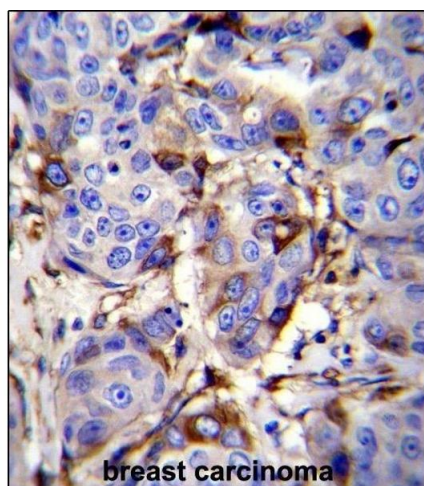
| | |
|-------------------|---|
| Background: | Catalyzes the addition of fucose in alpha 1-6 linkage to the first GlcNAc residue, next to the peptide chains in N-glycans. |
| Molecular Weight: | 16572 |
| Gene ID: | 5304 |
| NCBI Accession: | NP_002643 |
| UniProt: | P12273 |

Application Details

| | |
|--------------------|---|
| Application Notes: | IF: 1:10~50. WB: 1:1000. IHC-P: 1:10~50 |
| Restrictions: | For Research Use only |

Handling

| | |
|--------------------|--|
| Format: | Liquid |
| Buffer: | Purified polyclonal antibody supplied in PBS with 0.09 % (W/V) sodium azide. |
| Preservative: | Sodium azide |
| Precaution of Use: | This product contains Sodium azide: a POISONOUS AND HAZARDOUS SUBSTANCE which should be handled by trained staff only. |
| Storage: | 4 °C,-20 °C |
| Storage Comment: | Maintain refrigerated at 2-8 °C for up to 6 months. For long term storage store at -20 °C in small aliquots to prevent freeze-thaw cycles. |
| Expiry Date: | 6 months |



Immunohistochemistry (Paraffin-embedded Sections)

Image 1. GCDFP-15 Antibody (C-term) (ABIN655074 and ABIN2844706) immunohistochemistry analysis in formalin fixed and paraffin embedded human breast carcinoma followed by peroxidase conjugation of the secondary antibody and DAB staining. This data demonstrates the use of GCDFP-15 Antibody (C-term) for immunohistochemistry. Clinical relevance has not been evaluated.

Immunofluorescence

Image 2. Confocal immunofluorescent analysis of GCDFP-15 Antibody (C-term) (ABIN655074 and ABIN2844706) with MDA-M cell followed by Alexa Fluor 488-conjugated goat anti-rabbit IgG (green). DAPI was used to stain the cell nuclear (blue).

Western Blotting

Image 3. GCDFP-15 Antibody (C-term) (ABIN655074 and ABIN2844706) western blot analysis in MDA-M cell line lysates (35 µg/lane). This demonstrates the GCDFP-15 antibody detected the GCDFP-15 protein (arrow).