

Datasheet for ABIN655077
anti-IFI35 antibody (N-Term)[Go to Product page](#)

2 Images

Overview

Quantity:	400 µL
Target:	IFI35
Binding Specificity:	AA 15-42, N-Term
Reactivity:	Human
Host:	Rabbit
Clonality:	Polyclonal
Conjugate:	This IFI35 antibody is un-conjugated
Application:	Western Blotting (WB), Immunohistochemistry (Paraffin-embedded Sections) (IHC (p))

Product Details

Immunogen:	This IFI35 antibody is generated from rabbits immunized with a KLH conjugated synthetic peptide between 15-42 amino acids from the N-terminal region of human IFI35.
Clone:	RB20477
Isotype:	Ig Fraction
Purification:	This antibody is purified through a protein A column, followed by peptide affinity purification.

Target Details

Target:	IFI35
Alternative Name:	IFI35 (IFI35 Products)
Background:	Inhibins and activins inhibit and activate, respectively, the secretion of follitropin by the pituitary

Target Details

gland. Inhibins/activins are involved in regulating a number of diverse functions such as hypothalamic and pituitary hormone secretion, gonadal hormone secretion, germ cell development and maturation, erythroid differentiation, insulin secretion, nerve cell survival, embryonic axial development or bone growth, depending on their subunit composition. Inhibins appear to oppose the functions of activins.

Molecular Weight: 31546

Gene ID: 3430

NCBI Accession: [NP_005524](#)

UniProt: [P80217](#)

Application Details

Application Notes: WB: 1:1000. IHC-P: 1:50~100

Restrictions: For Research Use only

Handling

Format: Liquid

Buffer: Purified polyclonal antibody supplied in PBS with 0.09 % (W/V) sodium azide.

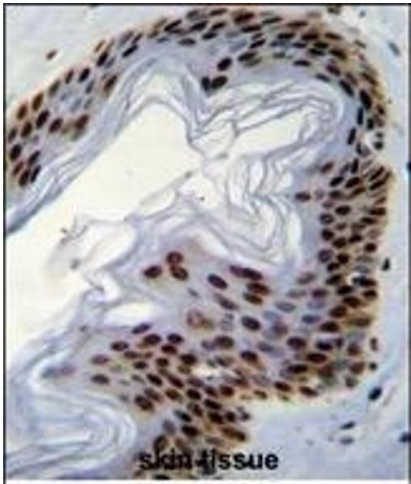
Preservative: Sodium azide

Precaution of Use: This product contains Sodium azide: a POISONOUS AND HAZARDOUS SUBSTANCE which should be handled by trained staff only.

Storage: 4 °C,-20 °C

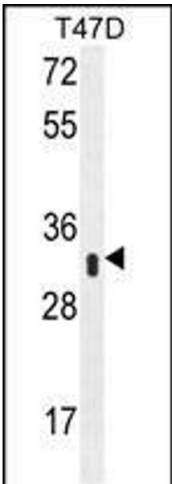
Storage Comment: Maintain refrigerated at 2-8 °C for up to 6 months. For long term storage store at -20 °C in small aliquots to prevent freeze-thaw cycles.

Expiry Date: 6 months



Immunohistochemistry (Paraffin-embedded Sections)

Image 1. IFI35 Antibody (N-term R30) (ABIN655077 and ABIN2844709) immunohistochemistry analysis in formalin fixed and paraffin embedded human skin tissue followed by peroxidase conjugation of the secondary antibody and DAB staining. This data demonstrates the use of IFI35 Antibody (N-term R30) for immunohistochemistry. Clinical relevance has not been evaluated.



Western Blotting

Image 2. IFI35 Antibody (N-term R30) (ABIN655077 and ABIN2844709) western blot analysis in T47D cell line lysates (35 µg/lane). This demonstrates the IFI35 antibody detected the IFI35 protein (arrow).