



[Go to Product page](#)

Datasheet for ABIN655078
anti-INHBA antibody (N-Term)

4 Images

Overview

Quantity:	400 µL
Target:	INHBA
Binding Specificity:	AA 85-112, N-Term
Reactivity:	Human
Host:	Rabbit
Clonality:	Polyclonal
Conjugate:	This INHBA antibody is un-conjugated
Application:	Western Blotting (WB), Immunofluorescence (IF), Flow Cytometry (FACS), Immunohistochemistry (Paraffin-embedded Sections) (IHC (p))

Product Details

Immunogen:	This INHBA antibody is generated from rabbits immunized with a KLH conjugated synthetic peptide between 85-112 amino acids from the N-terminal region of human INHBA.
Clone:	RB20703
Isotype:	Ig Fraction
Predicted Reactivity:	B, Hs, M, Rat, Sh
Purification:	This antibody is purified through a protein A column, followed by peptide affinity purification.

Target Details

Target:	INHBA
---------	-------

Target Details

Alternative Name: [INHBA \(INHBA Products\)](#)

Background: The inhibin beta A subunit joins the alpha subunit to form a pituitary FSH secretion inhibitor. Inhibin has been shown to regulate gonadal stromal cell proliferation negatively and to have tumor-suppressor activity. In addition, serum levels of inhibin have been shown to reflect the size of granulosa-cell tumors and can therefore be used as a marker for primary as well as recurrent disease. Because expression in gonadal and various extragonadal tissues may vary severalfold in a tissue-specific fashion, it is proposed that inhibin may be both a growth/differentiation factor and a hormone. Furthermore, the beta A subunit forms a homodimer, activin A, and also joins with a beta B subunit to form a heterodimer, activin AB, both of which stimulate FSH secretion. Finally, it has been shown that the beta A subunit mRNA is identical to the erythroid differentiation factor subunit mRNA and that only one gene for this mRNA exists in the human genome.

Molecular Weight: 47442

Gene ID: 3624

NCBI Accession: [NP_002183](#)

UniProt: [P08476](#)

Pathways: [Hormone Transport](#), [Peptide Hormone Metabolism](#), [Hormone Activity](#), [Negative Regulation of Hormone Secretion](#), [Autophagy](#)

Application Details

Application Notes: IF: 1:10~50. WB: 1:1000. IHC-P: 1:10~50. FC: 1:10~50

Restrictions: For Research Use only

Handling

Format: Liquid

Buffer: Purified polyclonal antibody supplied in PBS with 0.09 % (W/V) sodium azide.

Preservative: Sodium azide

Precaution of Use: This product contains Sodium azide: a POISONOUS AND HAZARDOUS SUBSTANCE which should be handled by trained staff only.

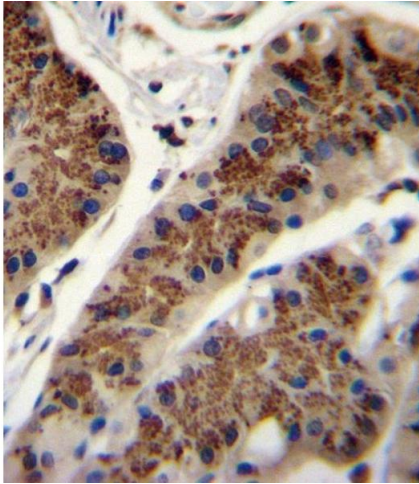
Storage: 4 °C,-20 °C

Storage Comment: Maintain refrigerated at 2-8 °C for up to 6 months. For long term storage store at -20 °C in small

aliquots to prevent freeze-thaw cycles.

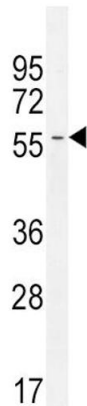
Expiry Date: 6 months

Images



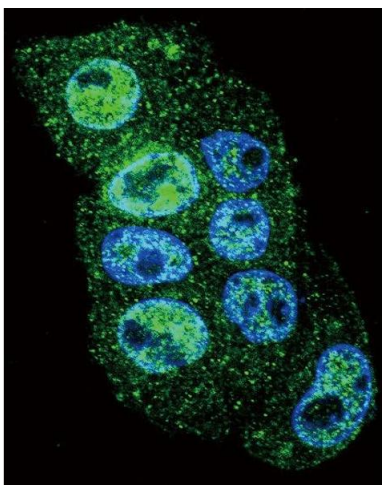
Immunohistochemistry (Paraffin-embedded Sections)

Image 1. INHBA Antibody (N-term) (ABIN655078 and ABIN2844710) immunohistochemistry analysis in formalin fixed and paraffin embedded human stomach tissue followed by peroxidase conjugation of the secondary antibody and DAB staining. This data demonstrates the use of INHBA Antibody (N-term) for immunohistochemistry. Clinical relevance has not been evaluated.



Western Blotting

Image 2. INHBA Antibody (N-term) (ABIN655078 and ABIN2844710) western blot analysis in CEM cell line lysates (35 µg/lane). This demonstrates the INHBA antibody detected the INHBA protein (arrow).



Immunofluorescence

Image 3. Confocal immunofluorescent analysis of INHBA Antibody (N-term) (ABIN655078 and ABIN2844710) with HepG2 cell followed by Alexa Fluor 488-conjugated goat anti-rabbit IgG (green). DAPI was used to stain the cell nuclear (blue).

Please check the [product details page](#) for more images. Overall 4 images are available for ABIN655078.