

Datasheet for ABIN655079
anti-ETFA antibody (C-Term)[Go to Product page](#)

3 Images

Overview

Quantity:	400 µL
Target:	ETFA
Binding Specificity:	AA 276-304, C-Term
Reactivity:	Human, Mouse
Host:	Rabbit
Clonality:	Polyclonal
Conjugate:	This ETFA antibody is un-conjugated
Application:	Western Blotting (WB), Flow Cytometry (FACS), Immunohistochemistry (Paraffin-embedded Sections) (IHC (p))

Product Details

Immunogen:	This ETFA antibody is generated from rabbits immunized with a KLH conjugated synthetic peptide between 276-304 amino acids from the C-terminal region of human ETFA.
Clone:	RB20724
Isotype:	Ig Fraction
Predicted Reactivity:	B, Pr, Rat
Purification:	This antibody is purified through a protein A column, followed by peptide affinity purification.

Target Details

Target:	ETFA
---------	------

Target Details

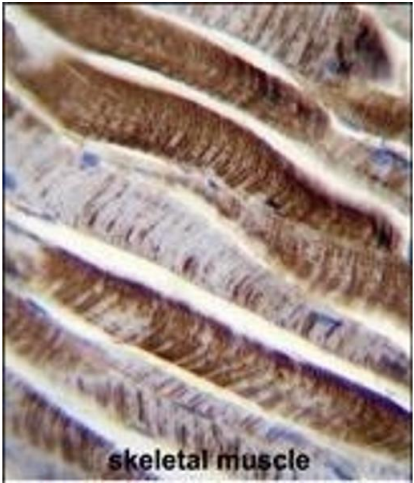
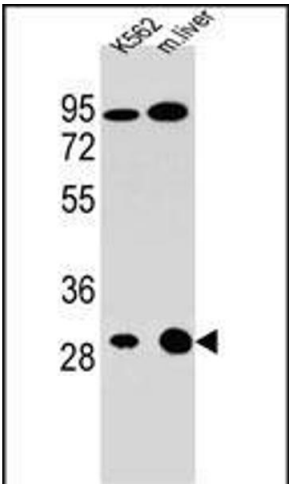
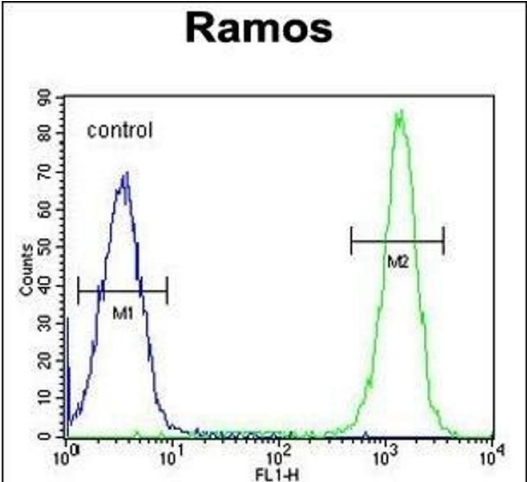
Alternative Name:	ETFA (ETFA Products)
Background:	ETFA participates in catalyzing the initial step of the mitochondrial fatty acid beta-oxidation. It shuttles electrons between primary flavoprotein dehydrogenases and the membrane-bound electron transfer flavoprotein ubiquinone oxidoreductase. Defects in electron-transfer-flavoprotein have been implicated in type II glutaricaciduria in which multiple acyl-CoA dehydrogenase deficiencies result in large excretion of glutaric, lactic, ethylmalonic, butyric, isobutyric, 2-methyl-butyric, and isovaleric acids. Two transcript variants encoding different isoforms have been found for this gene.
Molecular Weight:	35080
Gene ID:	2108
NCBI Accession:	NP_000117 , NP_001121188
UniProt:	P13804
Pathways:	SARS-CoV-2 Protein Interactome

Application Details

Application Notes:	WB: 1:1000. IHC-P: 1:50~100. FC: 1:10~50
Restrictions:	For Research Use only

Handling

Format:	Liquid
Buffer:	Purified polyclonal antibody supplied in PBS with 0.09 % (W/V) sodium azide.
Preservative:	Sodium azide
Precaution of Use:	This product contains Sodium azide: a POISONOUS AND HAZARDOUS SUBSTANCE which should be handled by trained staff only.
Storage:	4 °C, -20 °C
Storage Comment:	Maintain refrigerated at 2-8 °C for up to 6 months. For long term storage store at -20 °C in small aliquots to prevent freeze-thaw cycles.
Expiry Date:	6 months



Flow Cytometry

Image 1. ETFA Antibody (C-term) (ABIN655079 and ABIN2844711) flow cytometric analysis of Ramos cells (right histogram) compared to a negative control cell (left histogram).FITC-conjugated goat-anti-rabbit secondary antibodies were used for the analysis.

Western Blotting

Image 2. ETFA Antibody (C-term) (ABIN655079 and ABIN2844711) western blot analysis in K562 cell line and mouse liver tissue lysates (35 µg/lane).This demonstrates the ETFA antibody detected the ETFA protein (arrow).

Immunohistochemistry (Paraffin-embedded Sections)

Image 3. ETFA Antibody (C-term) (ABIN655079 and ABIN2844711) immunohistochemistry analysis in formalin fixed and paraffin embedded human skeletal muscle followed by peroxidase conjugation of the secondary antibody and DAB staining.This data demonstrates the use of ETFA Antibody (C-term) for immunohistochemistry. Clinical relevance has not been evaluated.