

Datasheet for ABIN655081
anti-EMG1 antibody (AA 104-133)[Go to Product page](#)

2 Images

Overview

Quantity:	400 µL
Target:	EMG1
Binding Specificity:	AA 104-133
Reactivity:	Human
Host:	Rabbit
Clonality:	Polyclonal
Conjugate:	This EMG1 antibody is un-conjugated
Application:	Western Blotting (WB), Flow Cytometry (FACS)

Product Details

Immunogen:	This EMG1 antibody is generated from rabbits immunized with a KLH conjugated synthetic peptide between 104-133 amino acids from the Central region of human EMG1.
Clone:	RB22286
Isotype:	Ig Fraction
Predicted Reactivity:	M
Purification:	This antibody is purified through a protein A column, followed by peptide affinity purification.

Target Details

Target:	EMG1
Alternative Name:	EMG1 (EMG1 Products)

Target Details

Background:	This gene encodes an essential, conserved eukaryotic protein involved in ribosome biogenesis. In yeast, the related protein is a component of the small subunit processome and is essential for biogenesis of the ribosomal 40S subunit. A mutation in this gene has been associated with Bowen-Conradi syndrome.
-------------	---

Molecular Weight:	26720
-------------------	-------

Gene ID:	10436
----------	-------

NCBI Accession:	NP_006322
-----------------	---------------------------

UniProt:	Q92979
----------	------------------------

Application Details

Application Notes:	WB: 1:1000. FC: 1:10~50
--------------------	-------------------------

Restrictions:	For Research Use only
---------------	-----------------------

Handling

Format:	Liquid
---------	--------

Buffer:	Purified polyclonal antibody supplied in PBS with 0.09 % (W/V) sodium azide.
---------	--

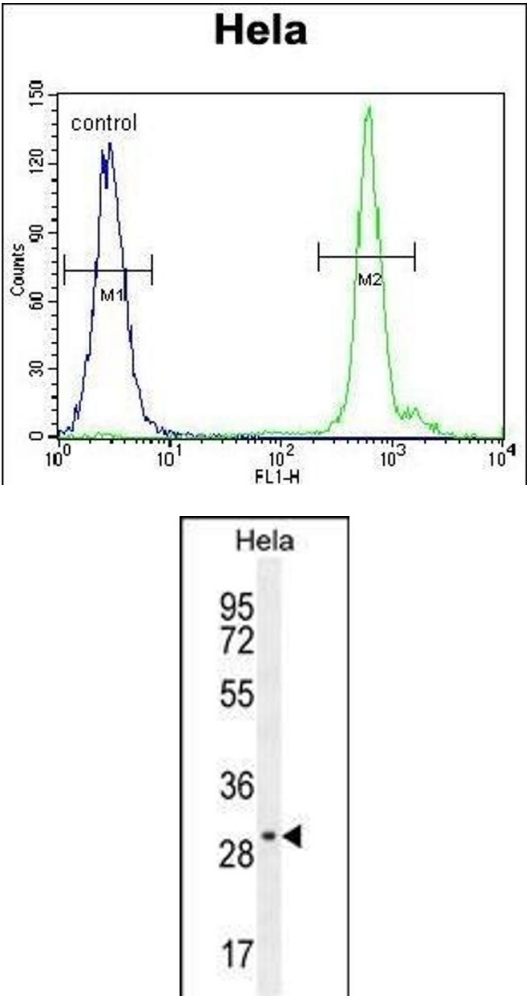
Preservative:	Sodium azide
---------------	--------------

Precaution of Use:	This product contains Sodium azide: a POISONOUS AND HAZARDOUS SUBSTANCE which should be handled by trained staff only.
--------------------	--

Storage:	4 °C,-20 °C
----------	-------------

Storage Comment:	Maintain refrigerated at 2-8 °C for up to 6 months. For long term storage store at -20 °C in small aliquots to prevent freeze-thaw cycles.
------------------	--

Expiry Date:	6 months
--------------	----------



Flow Cytometry

Image 1. EMG1 Antibody (Center) (ABIN655081 and ABIN2844713) flow cytometric analysis of Hela cells (right histogram) compared to a negative control cell (left histogram).FITC-conjugated goat-anti-rabbit secondary antibodies were used for the analysis.

Western Blotting

Image 2. EMG1 Antibody (Center) (ABIN655081 and ABIN2844713) western blot analysis in Hela cell line lysates (35 µg/lane).This demonstrates the EMG1 antibody detected the EMG1 protein (arrow).