



Datasheet for ABIN655082  
**anti-PHF12 antibody (C-Term)**



[Go to Product page](#)

2 Images

Overview

Quantity:	400 µL
Target:	PHF12
Binding Specificity:	AA 831-859, C-Term
Reactivity:	Mouse
Host:	Rabbit
Clonality:	Polyclonal
Conjugate:	This PHF12 antibody is un-conjugated
Application:	Western Blotting (WB), Immunohistochemistry (Paraffin-embedded Sections) (IHC (p))

Product Details

Immunogen:	This PHF12 antibody is generated from rabbits immunized with a KLH conjugated synthetic peptide between 831-859 amino acids from the C-terminal region of human PHF12.
Clone:	RB22523
Isotype:	Ig Fraction
Purification:	This antibody is purified through a protein A column, followed by peptide affinity purification.

Target Details

Target:	PHF12
Alternative Name:	PHF12 ( <a href="#">PHF12 Products</a> )
Background:	Inhibins and activins inhibit and activate, respectively, the secretion of follitropin by the pituitary

## Target Details

---

gland. Inhibins/activins are involved in regulating a number of diverse functions such as hypothalamic and pituitary hormone secretion, gonadal hormone secretion, germ cell development and maturation, erythroid differentiation, insulin secretion, nerve cell survival, embryonic axial development or bone growth, depending on their subunit composition. Inhibins appear to oppose the functions of activins.

---

Molecular Weight: 109698

---

Gene ID: 57649

---

NCBI Accession: [NP\\_001028733](#), [NP\\_065940](#)

---

UniProt: [Q96QT6](#)

## Application Details

---

Application Notes: WB: 1:1000. IHC-P: 1:50~100

---

Restrictions: For Research Use only

## Handling

---

Format: Liquid

---

Buffer: Purified polyclonal antibody supplied in PBS with 0.09 % (W/V) sodium azide.

---

Preservative: Sodium azide

---

Precaution of Use: This product contains Sodium azide: a POISONOUS AND HAZARDOUS SUBSTANCE which should be handled by trained staff only.

---

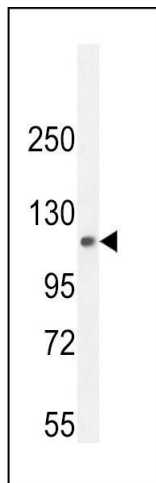
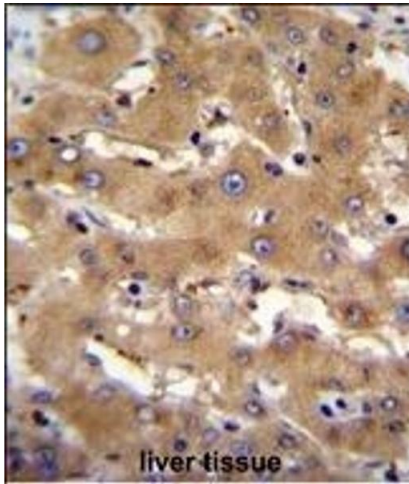
Storage: 4 °C,-20 °C

---

Storage Comment: Maintain refrigerated at 2-8 °C for up to 6 months. For long term storage store at -20 °C in small aliquots to prevent freeze-thaw cycles.

---

Expiry Date: 6 months



### Immunohistochemistry (Paraffin-embedded Sections)

**Image 1.** PHF12 Antibody (C-term) (ABIN655082 and ABIN2844716) immunohistochemistry analysis in formalin fixed and paraffin embedded human liver tissue followed by peroxidase conjugation of the secondary antibody and DAB staining. This data demonstrates the use of PHF12 Antibody (C-term) for immunohistochemistry. Clinical relevance has not been evaluated.

### Western Blotting

**Image 2.** PHF12 Antibody (C-term) (ABIN655082 and ABIN2844716) western blot analysis in mouse lung tissue lysates (35 µg/lane). This demonstrates the PHF12 antibody detected the PHF12 protein (arrow).