



Datasheet for ABIN655084
anti-ASXL1 antibody (AA 521-549)



[Go to Product page](#)

4 Images

Overview

Quantity:	400 µL
Target:	ASXL1
Binding Specificity:	AA 521-549
Reactivity:	Mouse
Host:	Rabbit
Clonality:	Polyclonal
Conjugate:	This ASXL1 antibody is un-conjugated
Application:	Western Blotting (WB), Flow Cytometry (FACS), Immunofluorescence (IF), Immunohistochemistry (Paraffin-embedded Sections) (IHC (p))

Product Details

Immunogen:	This ASXL1 antibody is generated from rabbits immunized with a KLH conjugated synthetic peptide between 521-549 amino acids from the Central region of human ASXL1.
Clone:	RB24070
Isotype:	Ig Fraction
Purification:	This antibody is purified through a protein A column, followed by peptide affinity purification.

Target Details

Target:	ASXL1
Alternative Name:	ASXL1 (ASXL1 Products)

Target Details

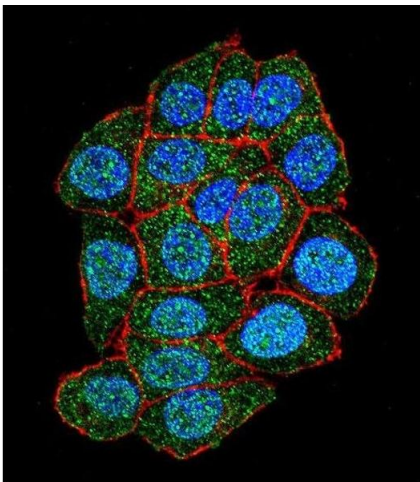
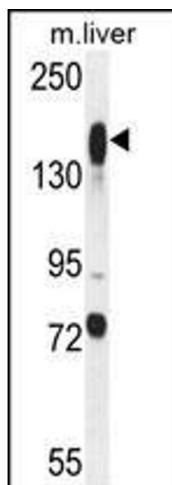
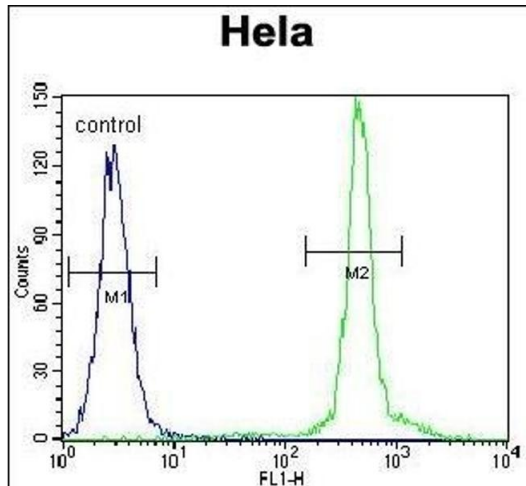
Background:	<p>This gene is similar to the Drosophila additional sex combs gene, which encodes a chromatin-binding protein required for normal determination of segment identity in the developing embryo. The protein is a member of the Polycomb group of proteins, which are necessary for the maintenance of stable repression of homeotic and other loci. The protein is thought to disrupt chromatin in localized areas, enhancing transcription of certain genes while repressing the transcription of other genes. The protein encoded by this gene functions as a ligand-dependent co-activator for retinoic acid receptor in cooperation with nuclear receptor coactivator 1. Mutations in this gene are associated with myelodysplastic syndromes and chronic myelomonocytic leukemia. Alternative splicing results in multiple transcript variants.</p>
Molecular Weight:	165432
Gene ID:	171023
NCBI Accession:	NP_056153
UniProt:	Q8IXJ9
Pathways:	Retinoic Acid Receptor Signaling Pathway

Application Details

Application Notes:	IF: 1:10~50. WB: 1:1000. IHC-P: 1:50~100. FC: 1:10~50
Restrictions:	For Research Use only

Handling

Format:	Liquid
Buffer:	Purified polyclonal antibody supplied in PBS with 0.09 % (W/V) sodium azide.
Preservative:	Sodium azide
Precaution of Use:	This product contains Sodium azide: a POISONOUS AND HAZARDOUS SUBSTANCE which should be handled by trained staff only.
Storage:	4 °C,-20 °C
Storage Comment:	Maintain refrigerated at 2-8 °C for up to 6 months. For long term storage store at -20 °C in small aliquots to prevent freeze-thaw cycles.
Expiry Date:	6 months



Flow Cytometry

Image 1. ASXL1 Antibody (Center) (ABIN655084 and ABIN2844718) flow cytometric analysis of HeLa cells (right histogram) compared to a negative control cell (left histogram). FITC-conjugated goat-anti-rabbit secondary antibodies were used for the analysis.

Western Blotting

Image 2. ASXL1 Antibody (Center) (ABIN655084 and ABIN2844718) western blot analysis in mouse liver tissue lysates (35 µg/lane). This demonstrates the ASXL1 antibody detected the ASXL1 protein (arrow).

Immunofluorescence

Image 3. Confocal immunofluorescent analysis of ASXL1 Antibody (Center) (ABIN655084 and ABIN2844718) with HeLa cell followed by Alexa Fluor 488-conjugated goat anti-rabbit IgG (green). Actin filaments have been labeled with Alexa Fluor 555 phalloidin (red). DAPI was used to stain the cell nuclear (blue).

Please check the [product details page](#) for more images. Overall 4 images are available for ABIN655084.