

Datasheet for ABIN655089
anti-RPL39 antibody (AA 15-42)[Go to Product page](#)

1 Image

Overview

Quantity:	400 µL
Target:	RPL39
Binding Specificity:	AA 15-42
Reactivity:	Mouse
Host:	Rabbit
Clonality:	Polyclonal
Conjugate:	This RPL39 antibody is un-conjugated
Application:	Western Blotting (WB)

Product Details

Immunogen:	This RPL39 antibody is generated from rabbits immunized with a KLH conjugated synthetic peptide between 15-42 amino acids from the Central region of human RPL39.
Clone:	RB24680
Isotype:	Ig Fraction
Predicted Reactivity:	H, B, C, Rat
Purification:	This antibody is purified through a protein A column, followed by peptide affinity purification.

Target Details

Target:	RPL39
Alternative Name:	RPL39 (RPL39 Products)

Target Details

Background: Ribosomes, the organelles that catalyze protein synthesis, consist of a small 40S subunit and a large 60S subunit. Together these subunits are composed of 4 RNA species and approximately 80 structurally distinct proteins. This gene encodes a ribosomal protein that is a component of the 60S subunit. The protein belongs to the S39E family of ribosomal proteins. It is located in the cytoplasm. In rat, the protein is the smallest, and one of the most basic, proteins of the ribosome. This gene is co-transcribed with the U69 small nucleolar RNA gene, which is located in its second intron. As is typical for genes encoding ribosomal proteins, there are multiple processed pseudogenes of this gene dispersed through the genome.

Molecular Weight: 6407

Gene ID: 6170

NCBI Accession: [NP_000991](#)

UniProt: [P62891](#)

Application Details

Application Notes: WB: 1:1000

Restrictions: For Research Use only

Handling

Format: Liquid

Buffer: Purified polyclonal antibody supplied in PBS with 0.09 % (W/V) sodium azide.

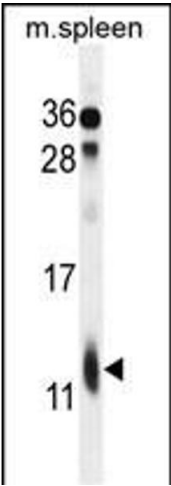
Preservative: Sodium azide

Precaution of Use: This product contains Sodium azide: a POISONOUS AND HAZARDOUS SUBSTANCE which should be handled by trained staff only.

Storage: 4 °C,-20 °C

Storage Comment: Maintain refrigerated at 2-8 °C for up to 6 months. For long term storage store at -20 °C in small aliquots to prevent freeze-thaw cycles.

Expiry Date: 6 months



Western Blotting

Image 1. RPL39 Antibody (Center) (ABIN655089 and ABIN2844722) western blot analysis in mouse spleen tissue lysates (35 µg/lane). This demonstrates the RPL39 antibody detected the RPL39 protein (arrow).