

Datasheet for ABIN655090
anti-IFT88 antibody (C-Term)[Go to Product page](#)

4 Images

3 Publications

Overview

Quantity:	400 µL
Target:	IFT88
Binding Specificity:	AA 791-820, C-Term
Reactivity:	Human, Mouse
Host:	Rabbit
Clonality:	Polyclonal
Conjugate:	This IFT88 antibody is un-conjugated
Application:	Western Blotting (WB), Immunofluorescence (IF), Immunohistochemistry (Paraffin-embedded Sections) (IHC (p))

Product Details

Immunogen:	This IFT88 antibody is generated from rabbits immunized with a KLH conjugated synthetic peptide between 791-820 amino acids from the C-terminal region of human IFT88.
Clone:	RB24875
Isotype:	Ig Fraction
Purification:	This antibody is purified through a protein A column, followed by peptide affinity purification.

Target Details

Target:	IFT88
Alternative Name:	IFT88 (IFT88 Products)

Target Details

Background:	This gene encodes a member of the tetratrico peptide repeat (TPR) family. Mutations of a similar gene in mouse can cause polycystic kidney disease. Two transcript variants encoding distinct isoforms have been identified for this gene. [provided by RefSeq].
Gene ID:	8100
NCBI Accession:	NP_006522 , NP_783195
UniProt:	Q13099
Pathways:	Hedgehog Signaling , Sensory Perception of Sound

Application Details

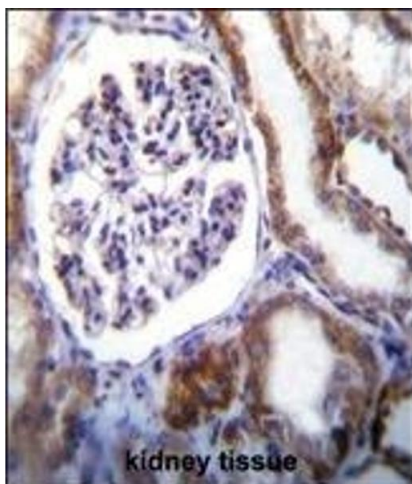
Application Notes:	IF: 1:10~50. WB: 1:1000. WB: 1:1000. IHC-P: 1:10~50
Restrictions:	For Research Use only

Handling

Format:	Liquid
Buffer:	Purified polyclonal antibody supplied in PBS with 0.09 % (W/V) sodium azide.
Preservative:	Sodium azide
Precaution of Use:	This product contains Sodium azide: a POISONOUS AND HAZARDOUS SUBSTANCE which should be handled by trained staff only.
Storage:	4 °C, -20 °C
Storage Comment:	Maintain refrigerated at 2-8 °C for up to 6 months. For long term storage store at -20 °C in small aliquots to prevent freeze-thaw cycles.
Expiry Date:	6 months

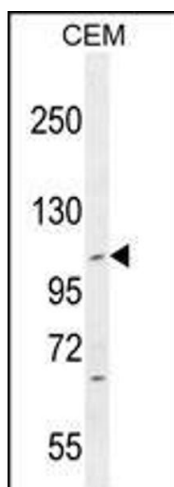
Publications

Product cited in:	Liang, Li, Zhang, Cui, Quan, Yang: "The anti-fibrotic effects of microRNA-153 by targeting TGFBR-2 in pulmonary fibrosis." in: Experimental and molecular pathology , Vol. 99, Issue 2, pp. 279-285, (2015) (PubMed).
-------------------	--



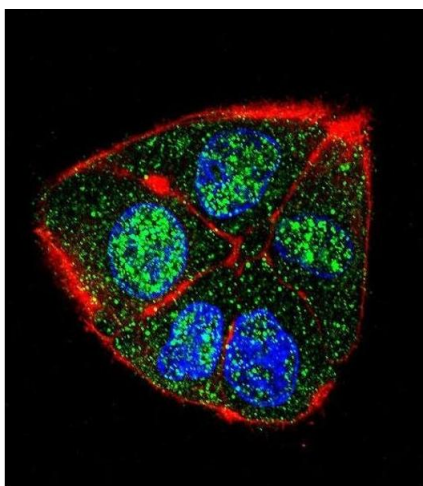
Immunohistochemistry (Paraffin-embedded Sections)

Image 1. IFT88 Antibody (C-term) (ABIN655090 and ABIN2844723) immunohistochemistry analysis in formalin fixed and paraffin embedded human kidney tissue followed by peroxidase conjugation of the secondary antibody and DAB staining. This data demonstrates the use of IFT88 Antibody (C-term) for immunohistochemistry. Clinical relevance has not been evaluated.



Western Blotting

Image 2. IFT88 Antibody (C-term) (ABIN655090 and ABIN2844723) western blot analysis in CEM cell line lysates (35 µg/lane). This demonstrates the IFT88 antibody detected the IFT88 protein (arrow).



Immunofluorescence

Image 3. Confocal immunofluorescent analysis of IFT88 Antibody (C-term) (ABIN655090 and ABIN2844723) with HepG2 cell followed by Alexa Fluor 488-conjugated goat anti-rabbit IgG (green). Actin filaments have been labeled with Alexa Fluor 555 phalloidin (red). DAPI was used to stain the cell nuclear (blue).

Please check the [product details page](#) for more images. Overall 4 images are available for ABIN655090.